

13 týden 2023 - Week 13

Státní zdravotní ústav - National Institute of Public Health

Hlášení akutních respiračních infekcí (ARI) - Notification of acute respiratory infections

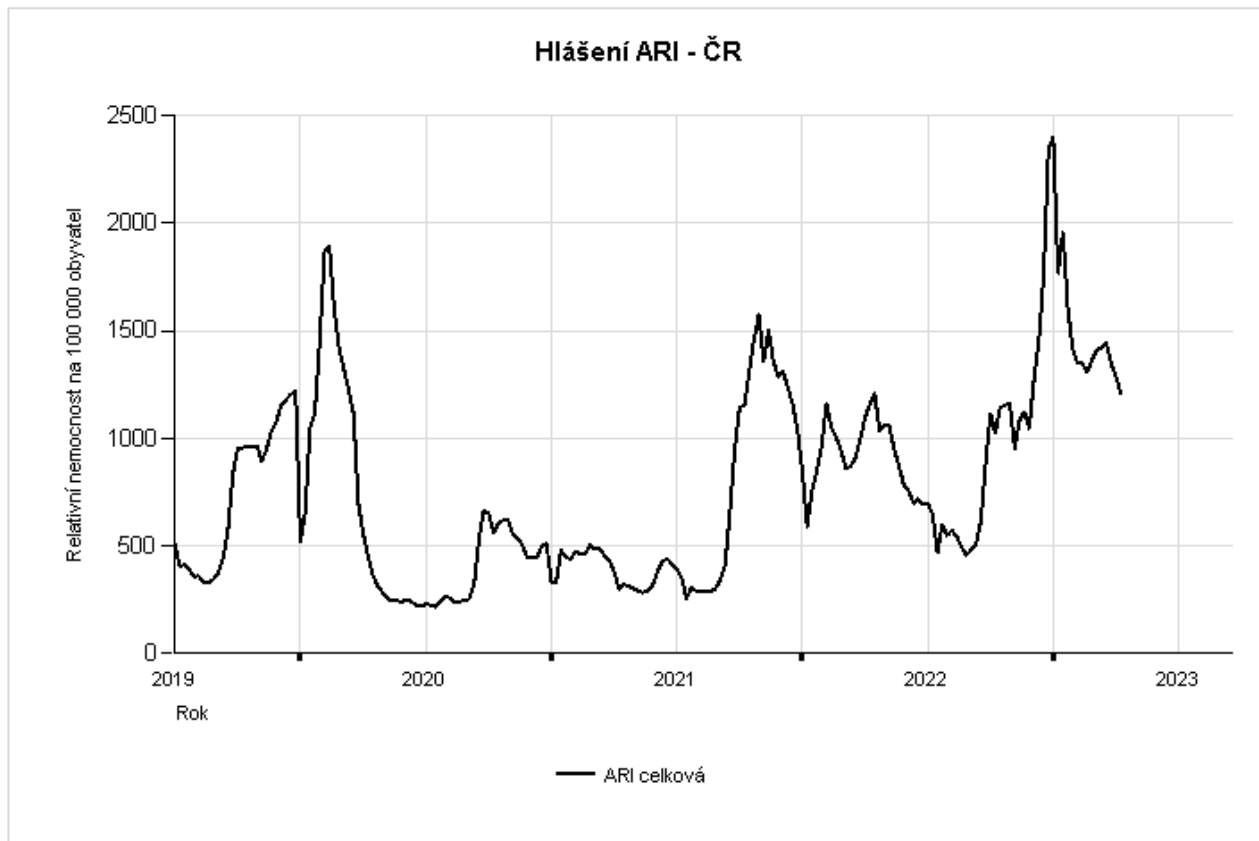
ARI	Relativní nemocnost na 100000 obyvatel - Morbidity per 100000 population					
	0 - 5 let/yrs	6 - 14 let/yrs	15 - 24 let/yrs	25 - 64 let/yrs	65+ let/yrs	Celkem / Total
Česká republika - the Czech Republic	3403	2157	1744	596	517	1209
<i>Změna - Change [%]</i>	-2,8	-9,64	-6,69	-4,94	-8,66	-5,99
<i>Komplikace - Complication [%]</i>	1,75	1,5	0,48	0,75	1,86	1,2

ILI	Relativní nemocnost na 100000 obyvatel - Morbidity per 100000 population					
	0 - 5 let/yrs	6 - 14 let/yrs	15 - 24 let/yrs	25 - 64 let/yrs	65+ let/yrs	Celkem / Total
Česká republika - the Czech Republic	123	103	69	39	36	59
<i>Změna - Change [%]</i>	-13,99	-14,17	-17,86	5,41	-23,4	-9,23

Weekly total acute respiratory infections morbidity per 100000 population

The Czech Republic

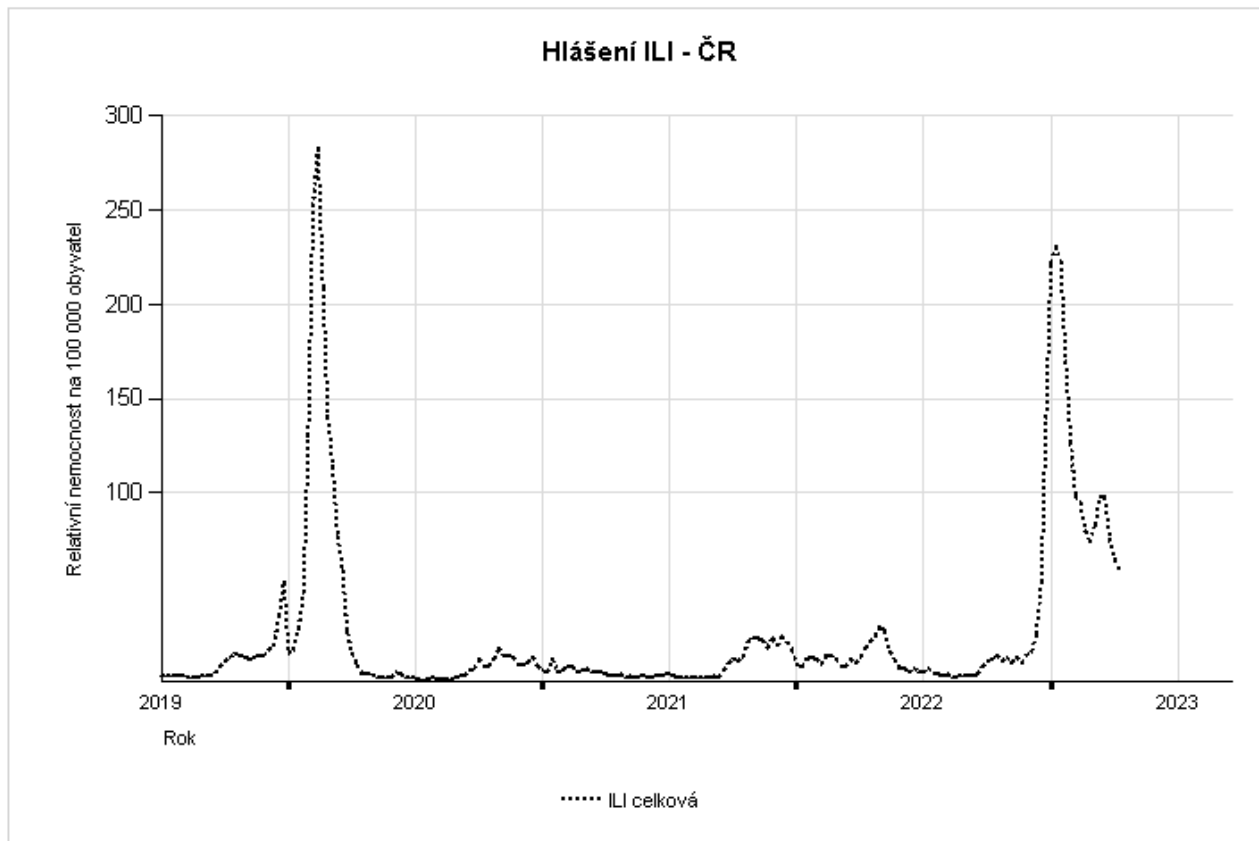
**Weekly total acute respiratory infections morbidity per 100000 population.
The Czech Republic**



Weekly total ILI morbidity per 100000 population

The Czech Republic

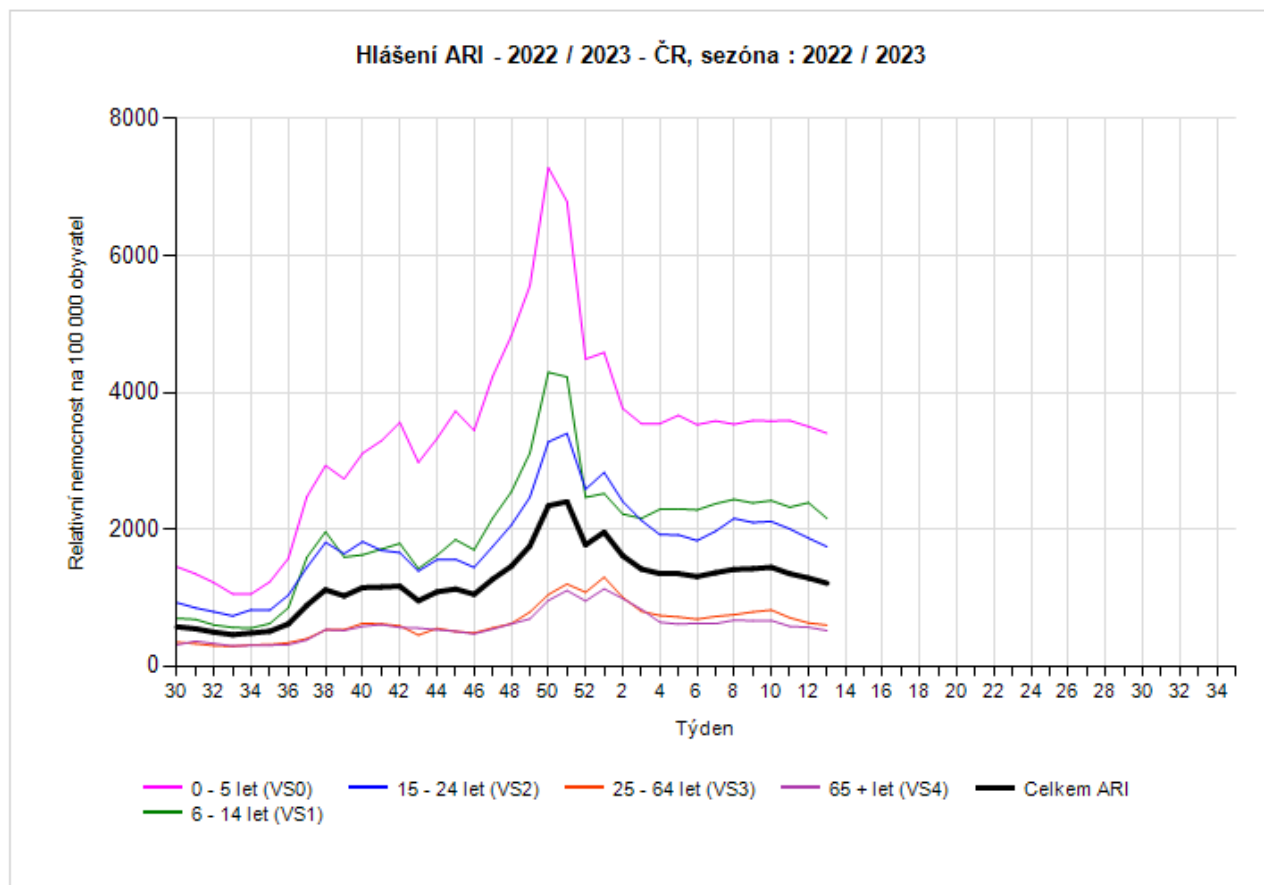
Weekly total ILI morbidity per 100000 population.
The Czech Republic



Weekly acute respiratory infections morbidity by age group per 100000 population, 2022/2023

The Czech Republic

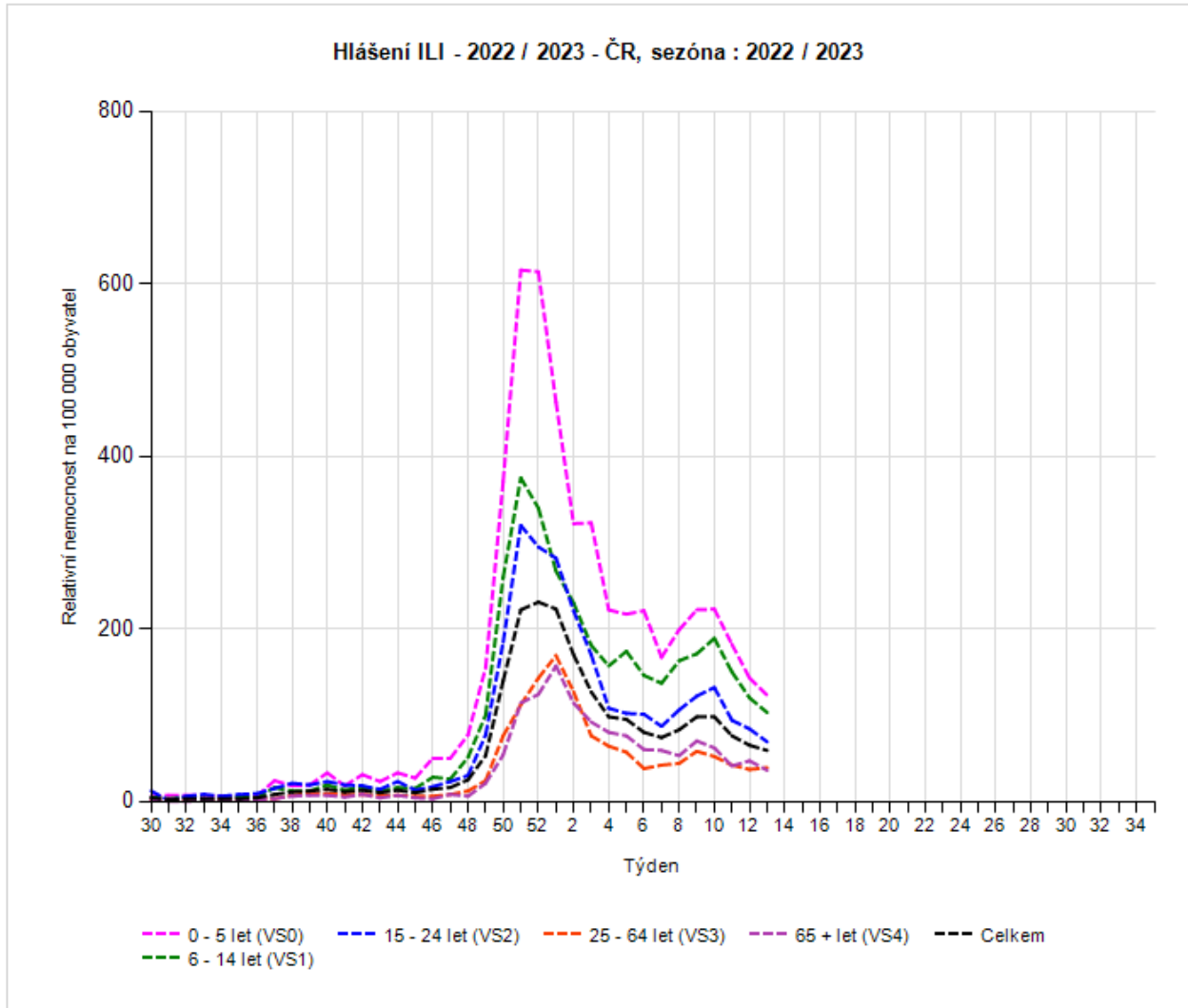
Weekly acute respiratory infections morbidity by age group per 100000 population, 2022 / 2023 The Czech Republic



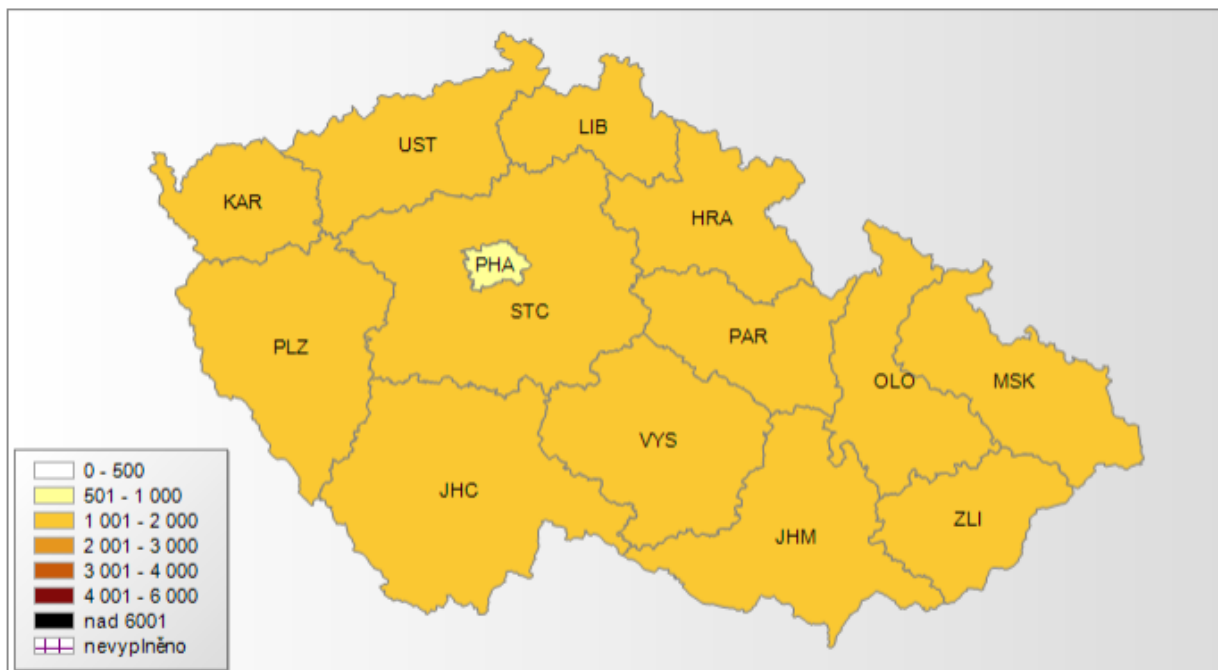
Weekly ILI morbidity by age group per 100000 population, 2022/2023

The Czech Republic

Weekly ILI morbidity by age group per 100000 population, 2022 / 2023 The Czech Republic

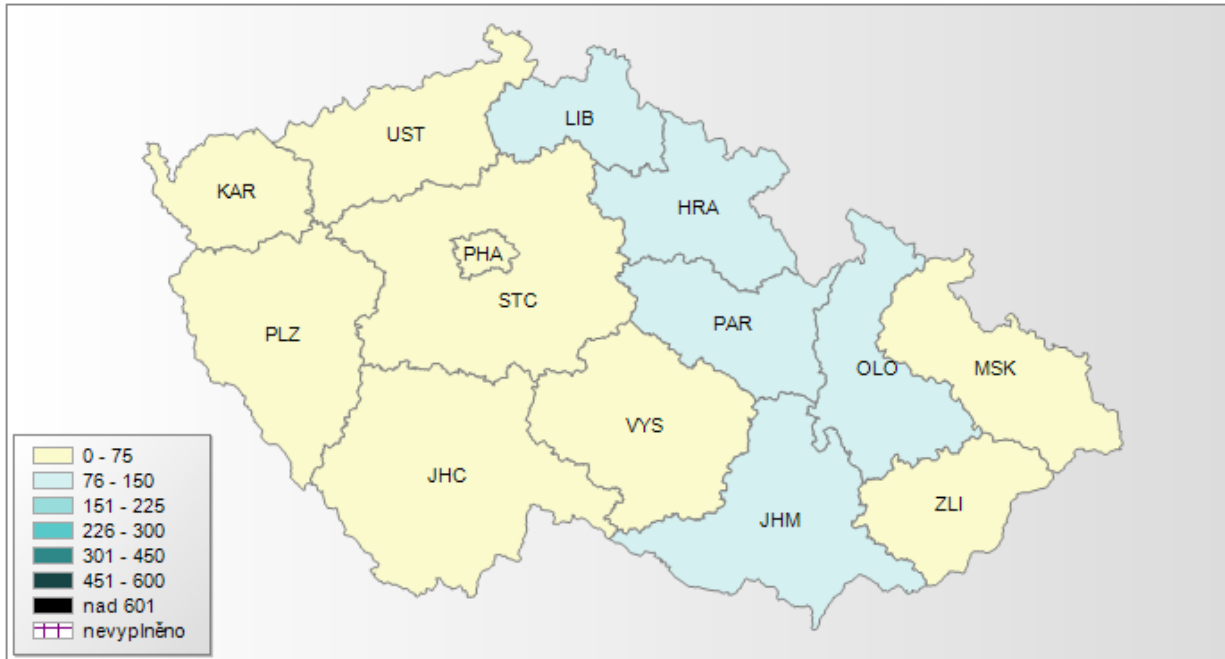


Nemocnost ARI pro kraje ČR 13/2023 (morbidity by region), rok: 2023, týden: 13, věková skup.: Celkem



Relativní nemocnost na 100000 obyvatel
ARI
týden 13/2023
věková skupina Celkem

Nemocnost ILI pro kraje ČR 13/2023 (morbidity by region)rok: 2023, týden: 13, věková skup.: Celkem



Relativní nemocnost na 100000 obyvatel
ILI
týden 13/2023
věková skupina Celkem