

15 týden 2023 - Week 15

Státní zdravotní ústav - National Institute of Public Health**Hlášení akutních respiračních infekcí (ARI) - Notification of acute respiratory infections**

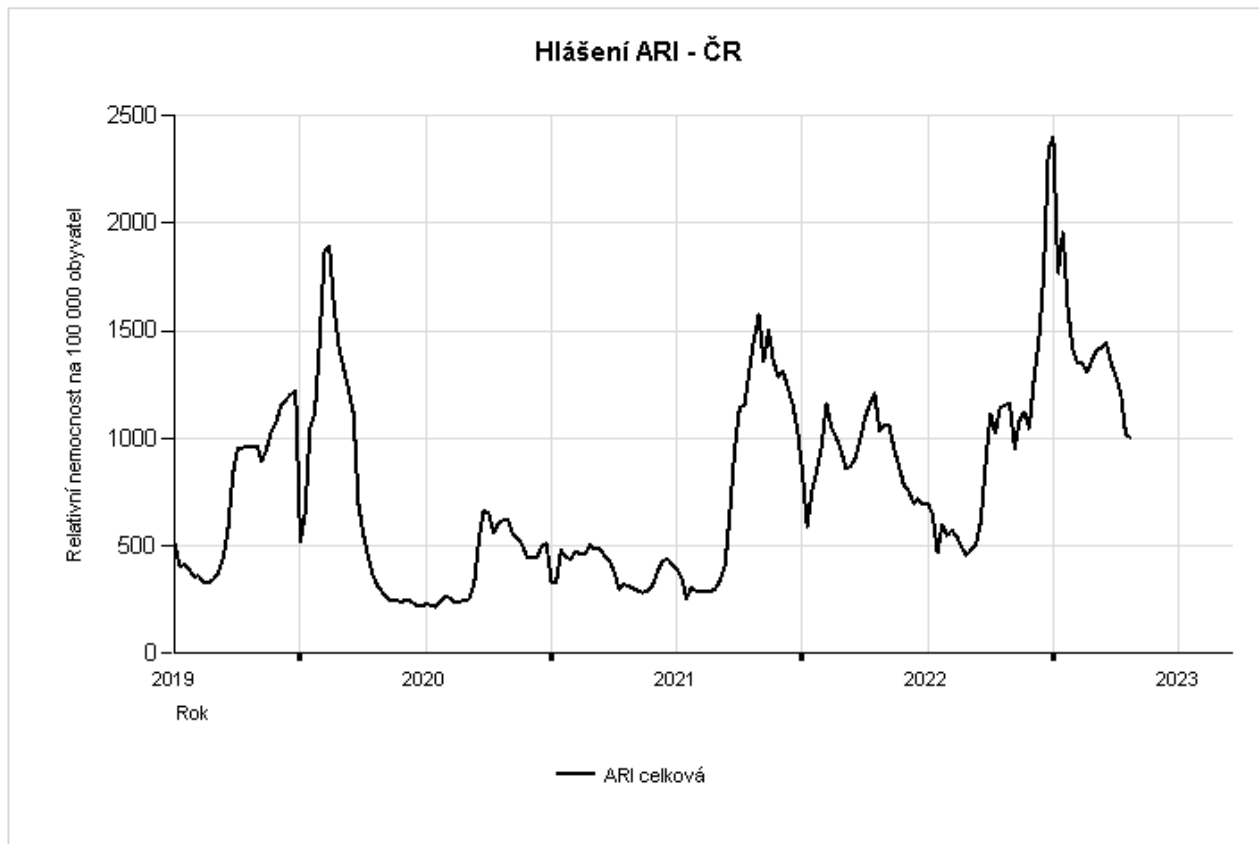
ARI	Relativní nemocnost na 100000 obyvatel - Morbidity per 100000 population					
	0 - 5 let/yrs	6 - 14 let/yrs	15 - 24 let/yrs	25 - 64 let/yrs	65+ let/yrs	Celkem / Total
Česká republika - the Czech Republic	2891	1773	1474	472	468	1003
<i>Změna - Change [%]</i>	-3,67	-7,27	3	2,16	3,77	-1,47
<i>Komplikace - Complication [%]</i>	1,46	1,25	0,52	0,76	1,49	1,06

ILI	Relativní nemocnost na 100000 obyvatel - Morbidity per 100000 population					
	0 - 5 let/yrs	6 - 14 let/yrs	15 - 24 let/yrs	25 - 64 let/yrs	65+ let/yrs	Celkem / Total
Česká republika - the Czech Republic	74	63	48	11	13	29
<i>Změna - Change [%]</i>	-16,85	-29,21	41,18	-26,67	-13,33	-14,71

Weekly total acute respiratory infections morbidity per 100000 population

The Czech Republic

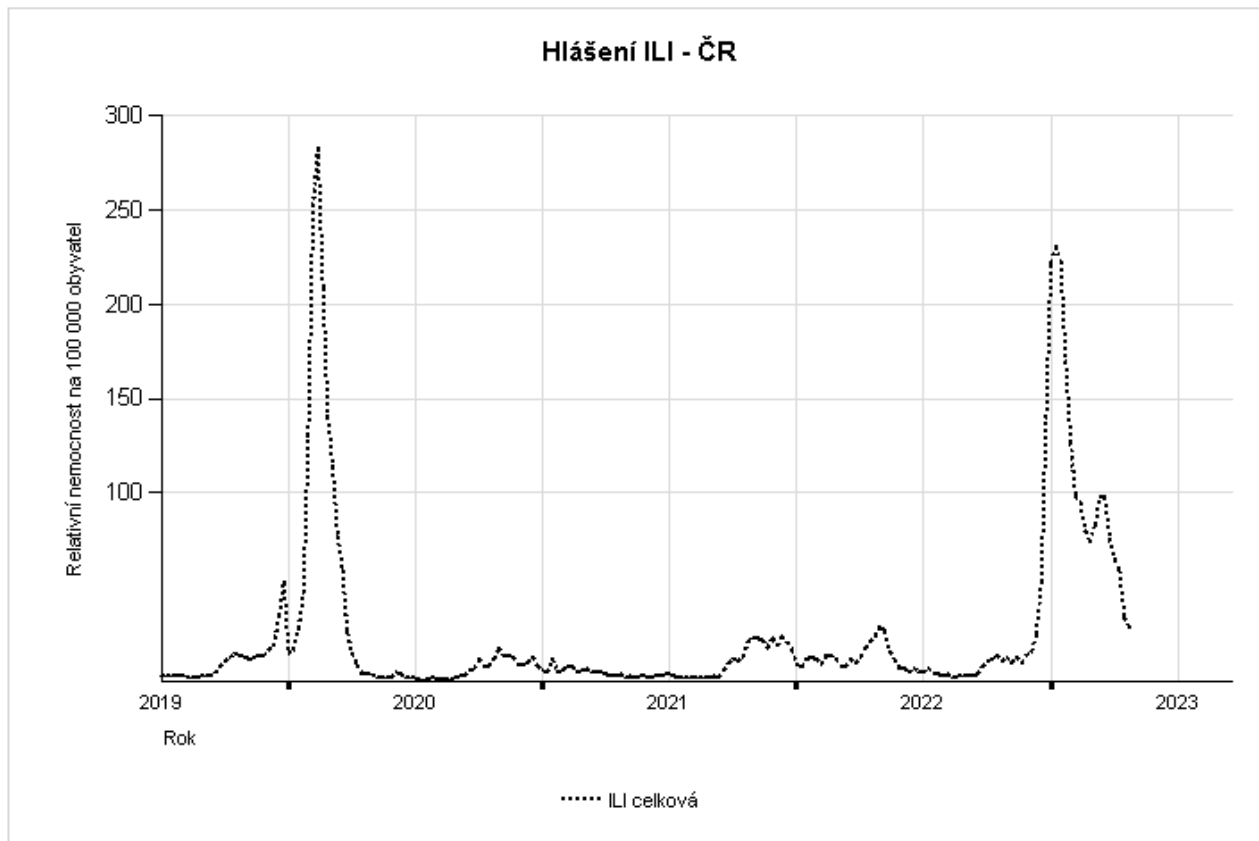
**Weekly total acute respiratory infections morbidity per 100000 population.
The Czech Republic**



Weekly total ILI morbidity per 100000 population

The Czech Republic

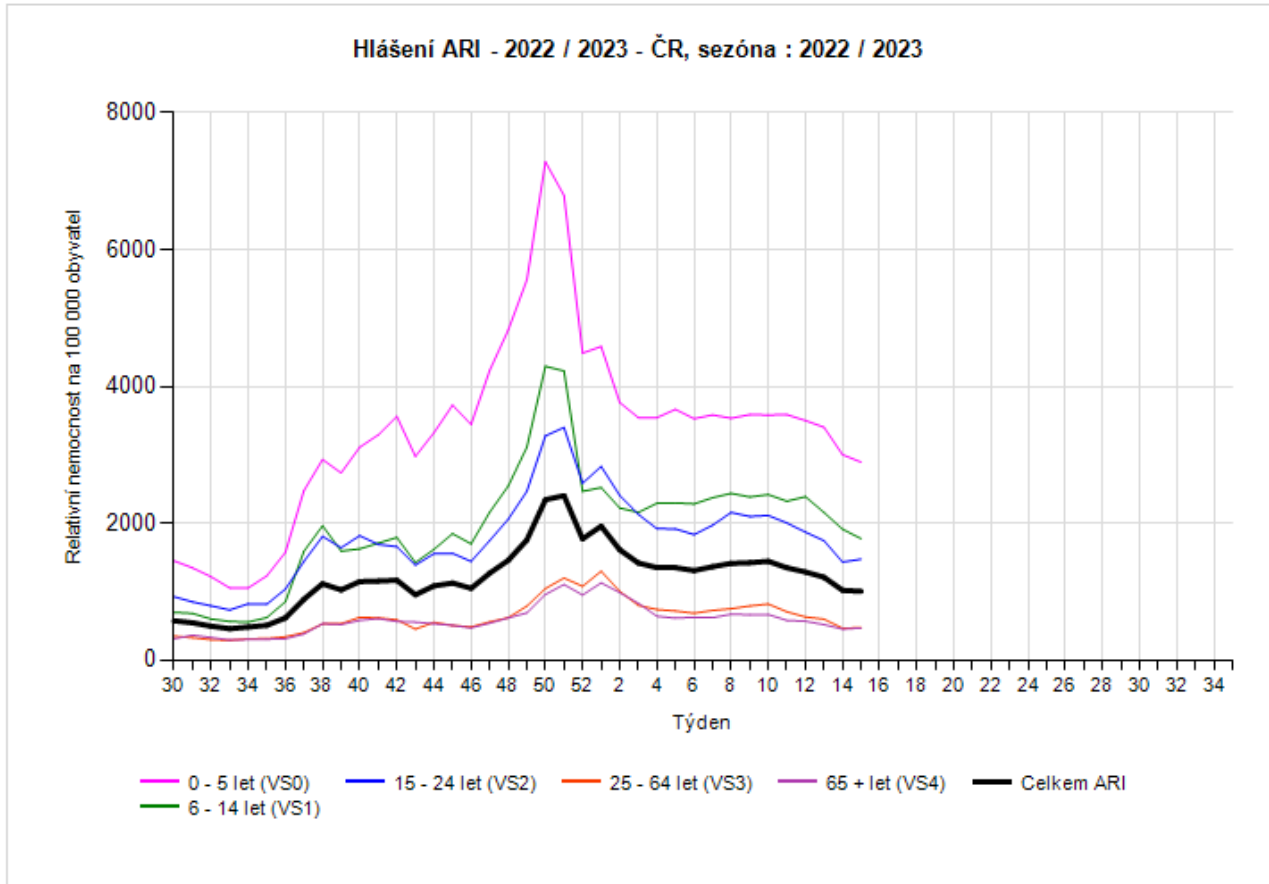
Weekly total ILI morbidity per 100000 population.
The Czech Republic



Weekly acute respiratory infections morbidity by age group per 100000 population, 2022/2023

The Czech Republic

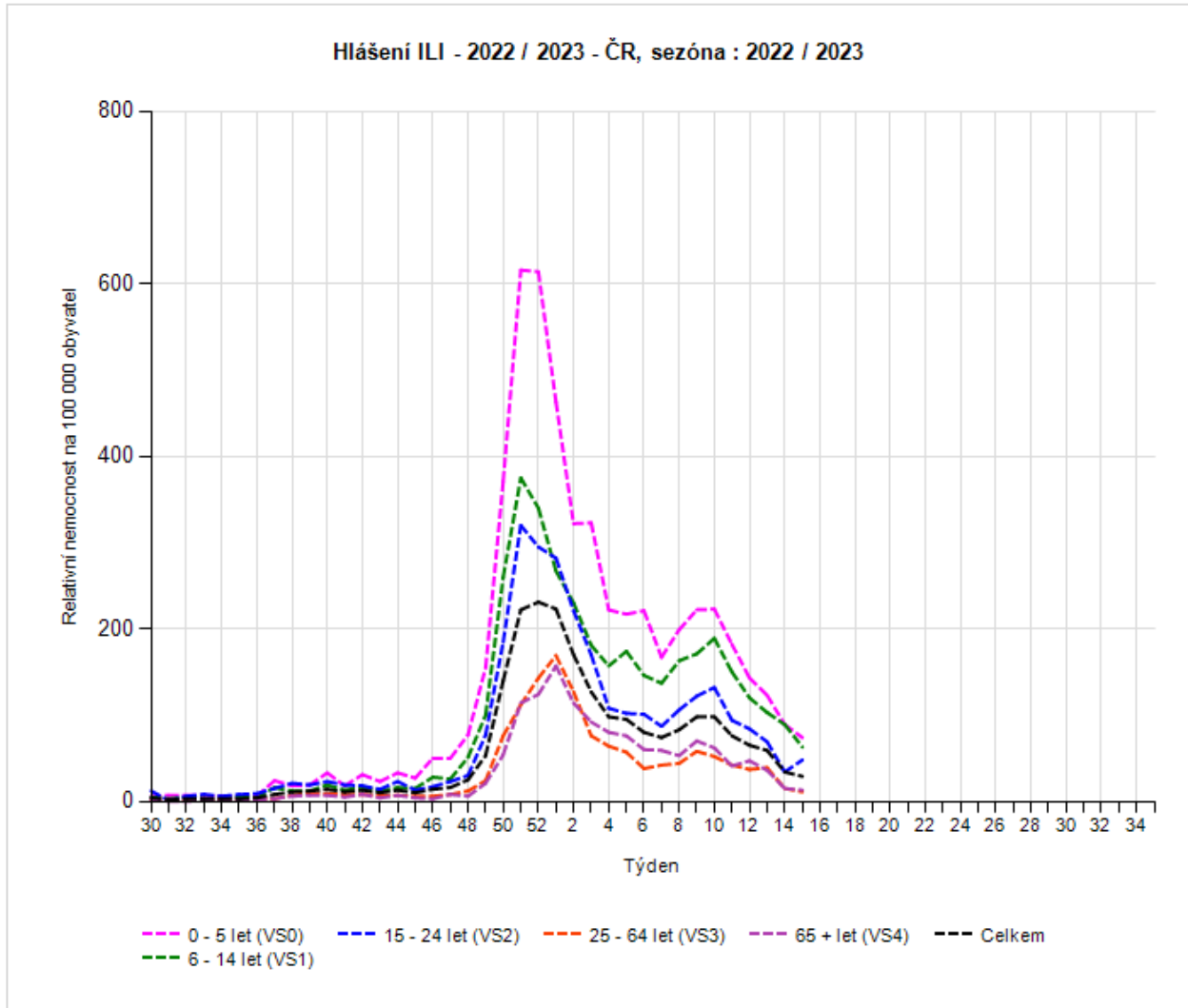
Weekly acute respiratory infections morbidity by age group per 100000 population, 2022 / 2023 The Czech Republic



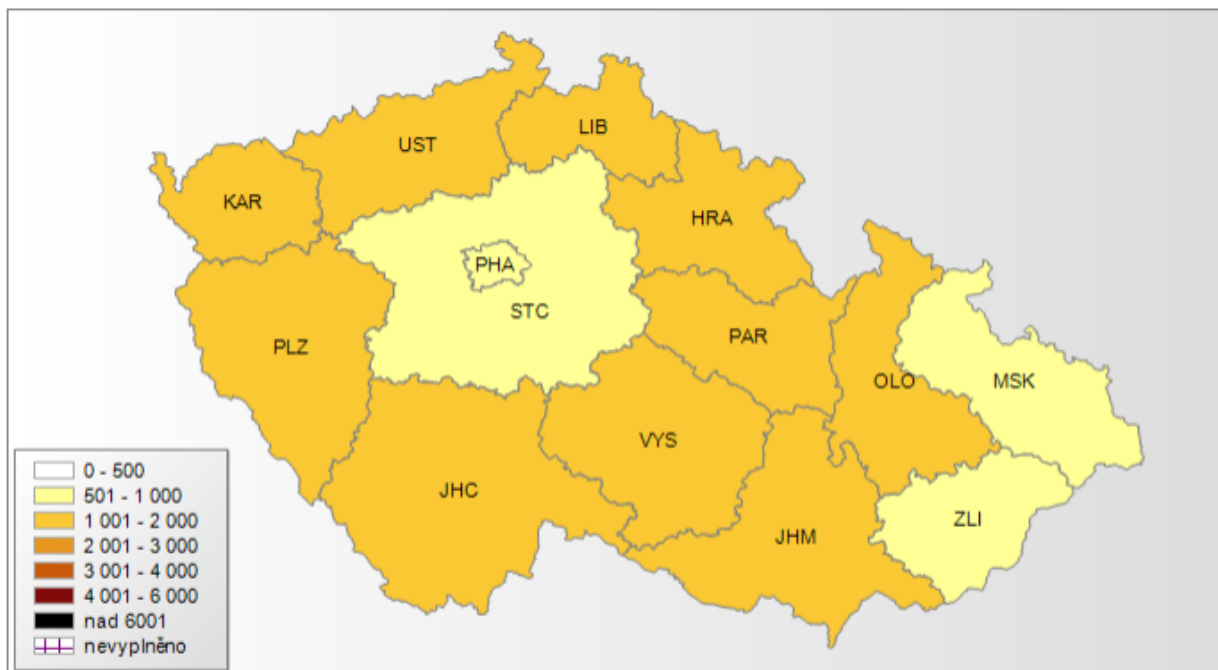
Weekly ILI morbidity by age group per 100000 population, 2022/2023

The Czech Republic

Weekly ILI morbidity by age group per 100000 population, 2022 / 2023 The Czech Republic



Nemocnost ARI pro kraje ČR 15/2023 (morbidity by region), rok: 2023, týden: 15, věková skup.: Celkem



Relativní nemocnost na 100000 obyvatel
ARI
týden 15/2023
věková skupina Celkem

Nemocnost ILI pro kraje ČR 15/2023 (morbidity by region)rok: 2023, týden: 15, věková skup.: Celkem



Relativní nemocnost na 100000 obyvatel
ILI
týden 15/2023
věková skupina Celkem