

## 29 týden 2023 - Week 29

**Státní zdravotní ústav - National Institute of Public Health****Hlášení akutních respiračních infekcí (ARI) - Notification of acute respiratory infections**

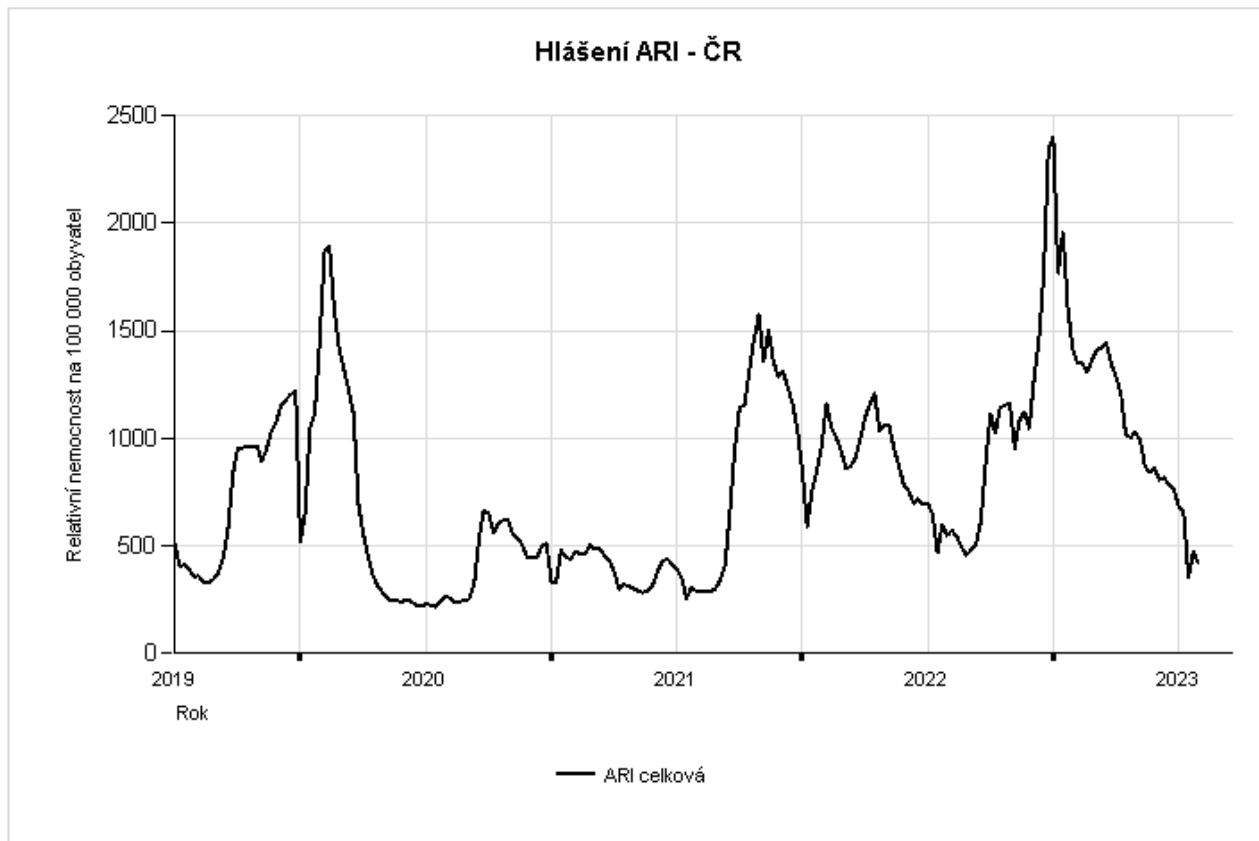
ARI	Relativní nemocnost na 100000 obyvatel - Morbidity per 100000 population					
	0 - 5 let/yrs	6 - 14 let/yrs	15 - 24 let/yrs	25 - 64 let/yrs	65+ let/yrs	Celkem / Total
<b>Česká republika - the Czech Republic</b>	<b>1210</b>	<b>648</b>	<b>650</b>	<b>214</b>	<b>202</b>	<b>422</b>
<i>Změna - Change [%]</i>	<i>-13,39</i>	<i>-18,39</i>	<i>-2,26</i>	<i>-7,76</i>	<i>-8,18</i>	<i>-10,59</i>
<i>Komplikace - Complication [%]</i>	<i>0,46</i>	<i>0,47</i>	<i>0,04</i>	<i>0,66</i>	<i>0,63</i>	<i>0,47</i>

ILI	Relativní nemocnost na 100000 obyvatel - Morbidity per 100000 population					
	0 - 5 let/yrs	6 - 14 let/yrs	15 - 24 let/yrs	25 - 64 let/yrs	65+ let/yrs	Celkem / Total
<b>Česká republika - the Czech Republic</b>	<b>7</b>	<b>4</b>	<b>2</b>	<b>1</b>	<b>1</b>	<b>2</b>
<i>Změna - Change [%]</i>	<i>-30</i>	<i>-42,86</i>	<i>-80</i>	<i>0</i>	<i>0</i>	<i>-50</i>

# Weekly total acute respiratory infections morbidity per 100000 population

The Czech Republic

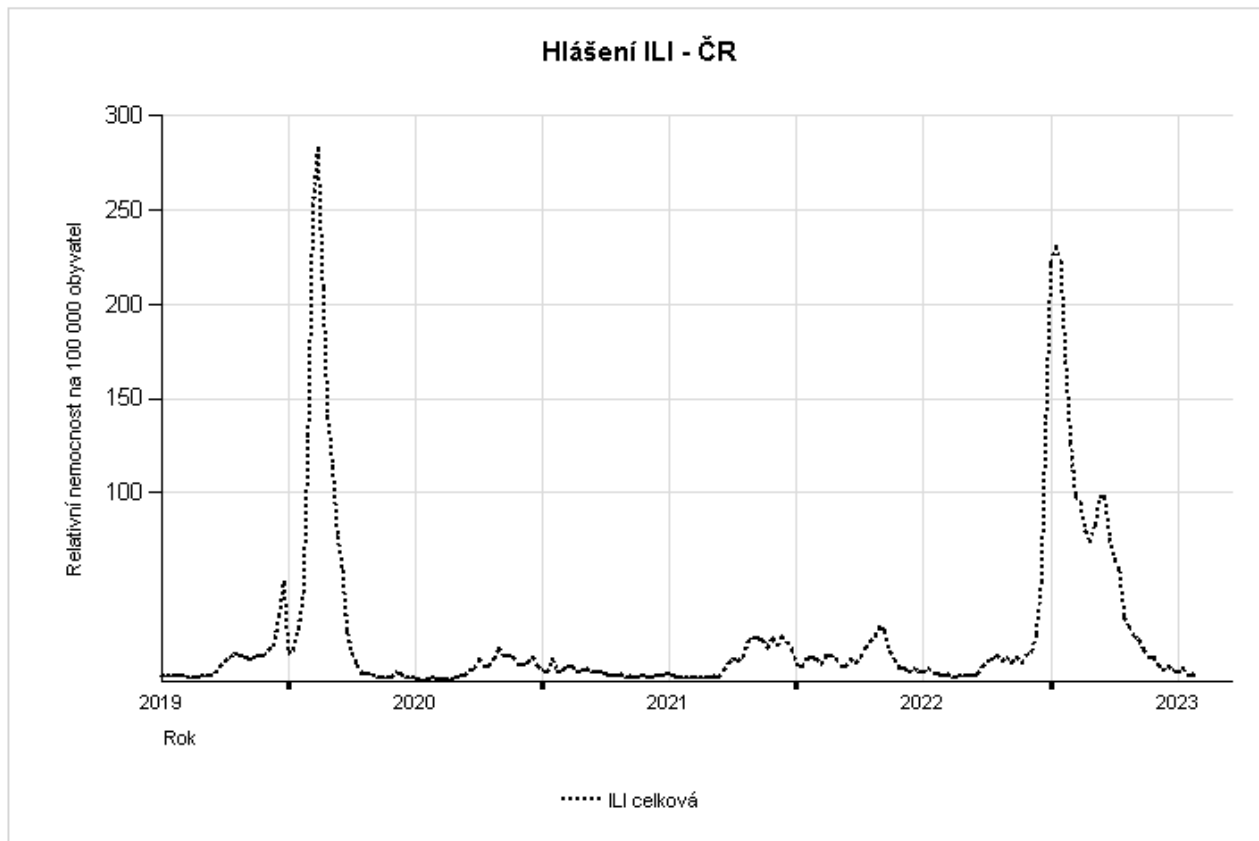
**Weekly total acute respiratory infections morbidity per 100000 population.  
The Czech Republic**



# Weekly total ILI morbidity per 100000 population

The Czech Republic

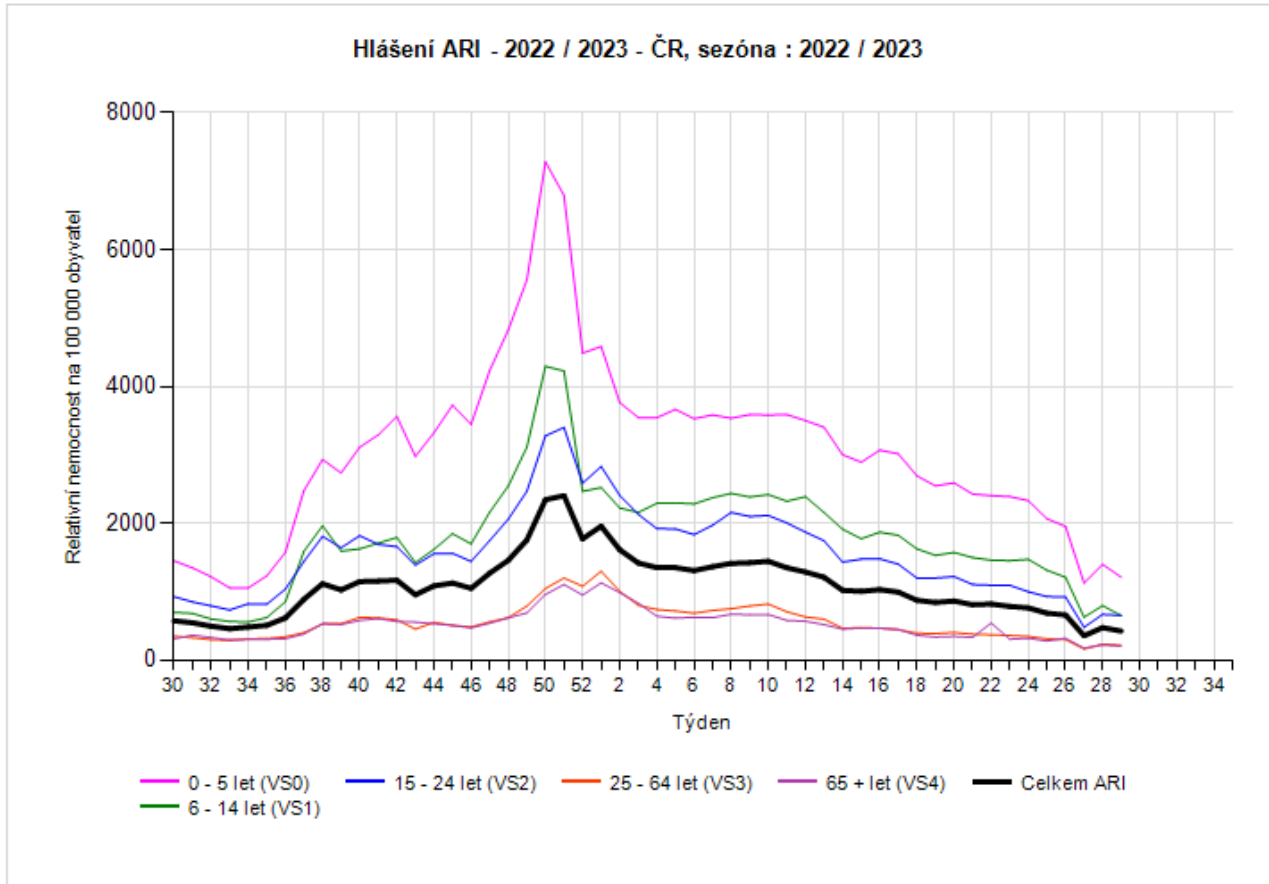
Weekly total ILI morbidity per 100000 population.  
The Czech Republic



# Weekly acute respiratory infections morbidity by age group per 100000 population, 2022/2023

The Czech Republic

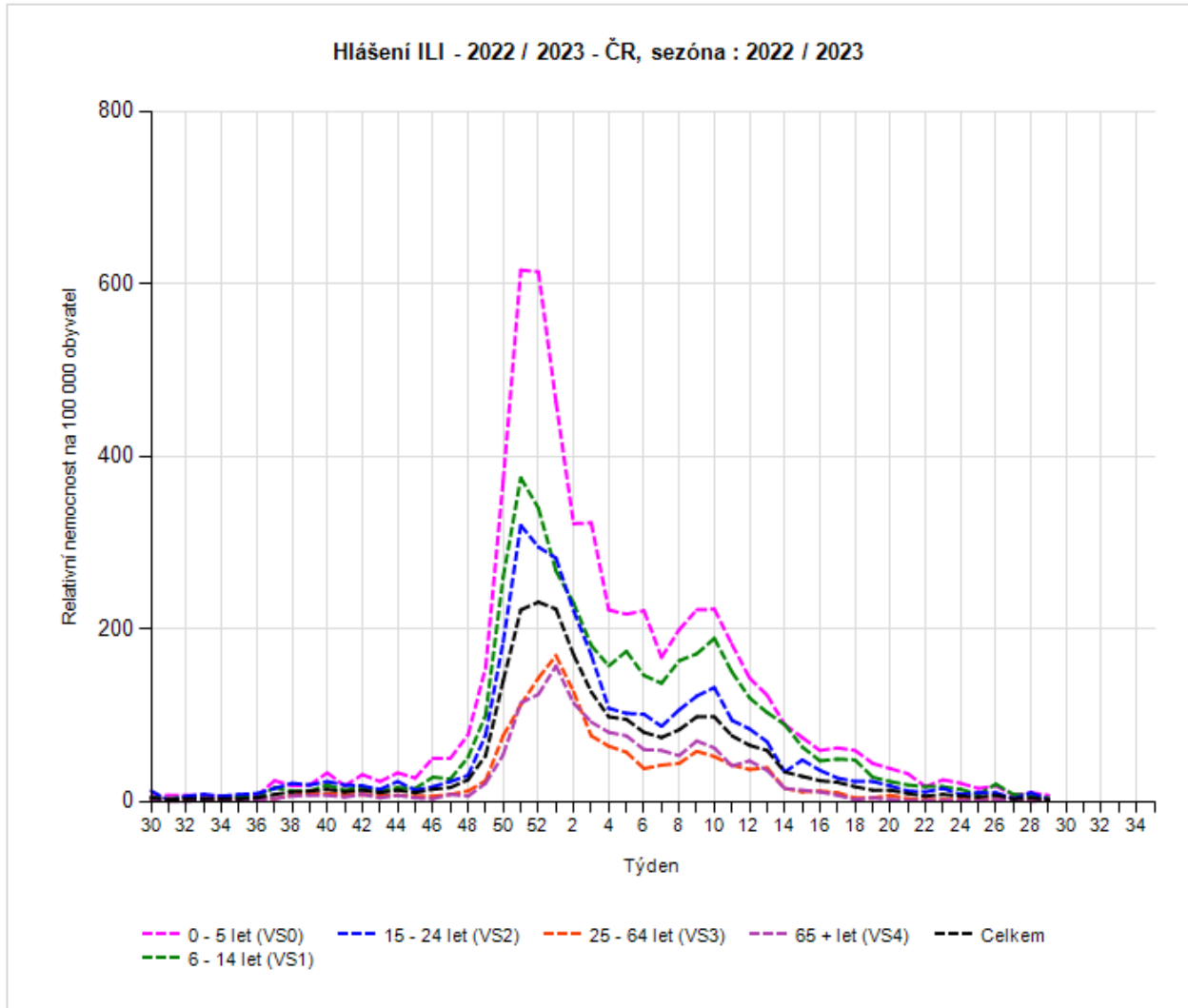
## Weekly acute respiratory infections morbidity by age group per 100000 population, 2022 / 2023 The Czech Republic



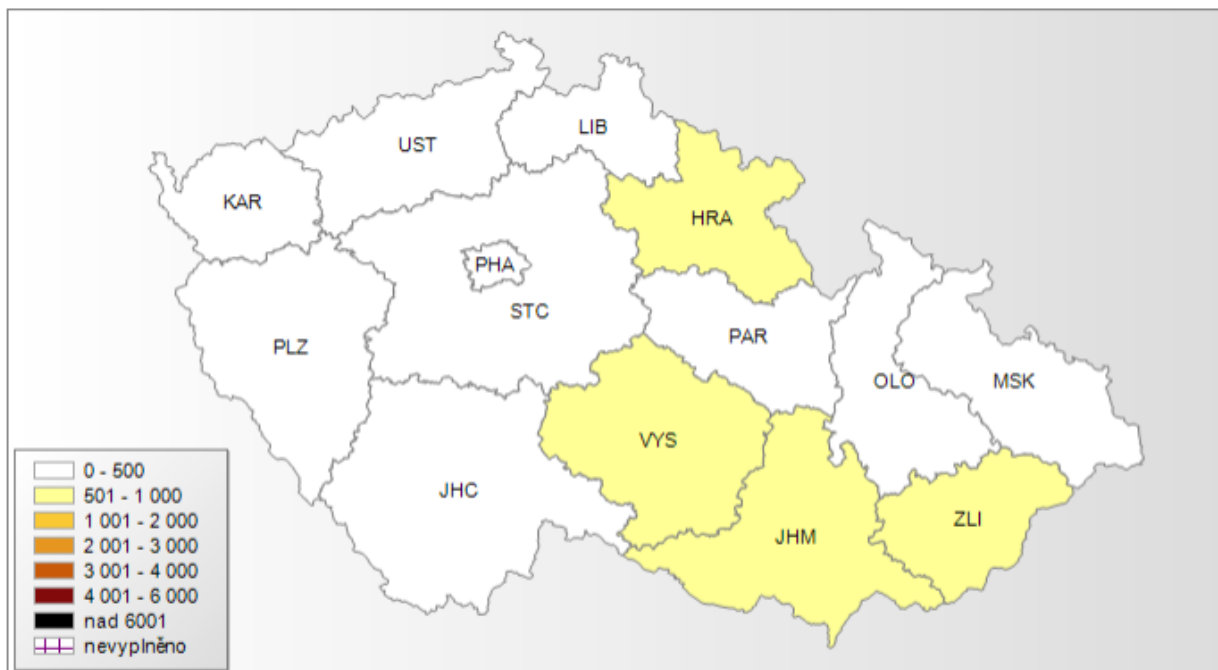
# Weekly ILI morbidity by age group per 100000 population, 2022/2023

The Czech Republic

## Weekly ILI morbidity by age group per 100000 population, 2022 / 2023 The Czech Republic



Nemocnost ARI pro kraje ČR 29/2023 (morbidity by region), rok: 2023, týden: 29, věková skup.: Celkem



Relativní nemocnost na 100000 obyvatel  
ARI  
týden 29/2023  
věková skupina Celkem

Nemocnost ILI pro kraje ČR 29/2023 (morbidity by region)rok: 2023, týden: 29, věková skup.: Celkem



Relativní nemocnost na 100000 obyvatel  
ILI  
týden 29/2023  
věková skupina Celkem