

## 35 týden 2023 - Week 35

**Státní zdravotní ústav - National Institute of Public Health****Hlášení akutních respiračních infekcí (ARI) - Notification of acute respiratory infections**

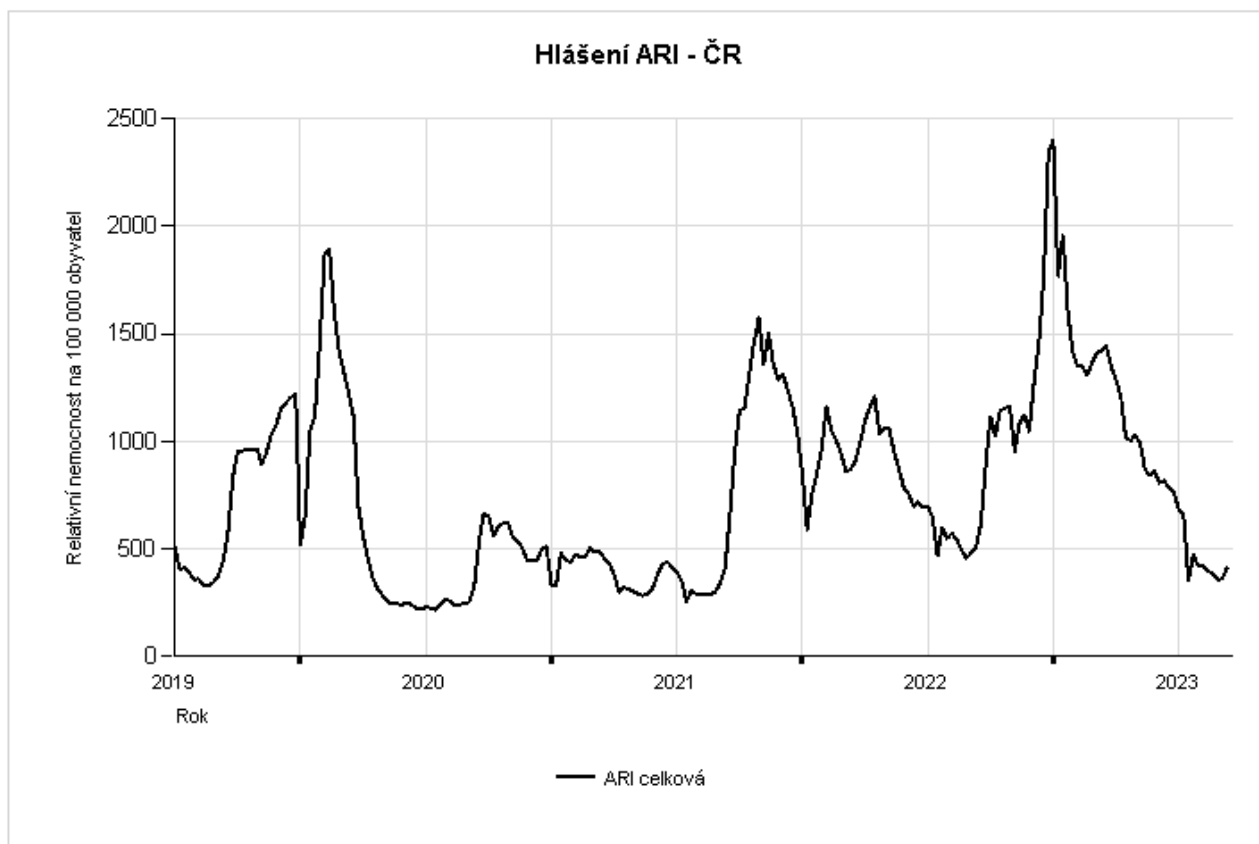
ARI	Relativní nemocnost na 100000 obyvatel - Morbidity per 100000 population					
	0 - 5 let/yrs	6 - 14 let/yrs	15 - 24 let/yrs	25 - 64 let/yrs	65+ let/yrs	Celkem / Total
<b>Česká republika - the Czech Republic</b>	<b>1092</b>	<b>578</b>	<b>654</b>	<b>224</b>	<b>217</b>	<b>410</b>
<i>Změna - Change [%]</i>	<i>18,57</i>	<i>6,45</i>	<i>12,95</i>	<i>14,87</i>	<i>13,02</i>	<i>13,57</i>
<i>Komplikace - Complication [%]</i>	<i>0,51</i>	<i>0,49</i>	<i>0,04</i>	<i>0,44</i>	<i>0,75</i>	<i>0,43</i>

ILI	Relativní nemocnost na 100000 obyvatel - Morbidity per 100000 population					
	0 - 5 let/yrs	6 - 14 let/yrs	15 - 24 let/yrs	25 - 64 let/yrs	65+ let/yrs	Celkem / Total
<b>Česká republika - the Czech Republic</b>	<b>10</b>	<b>8</b>	<b>8</b>	<b>2</b>	<b>1</b>	<b>4</b>
<i>Změna - Change [%]</i>	<i>0</i>	<i>166,67</i>	<i>60</i>	<i>0</i>	<i>0</i>	<i>33,33</i>

# Weekly total acute respiratory infections morbidity per 100000 population

The Czech Republic

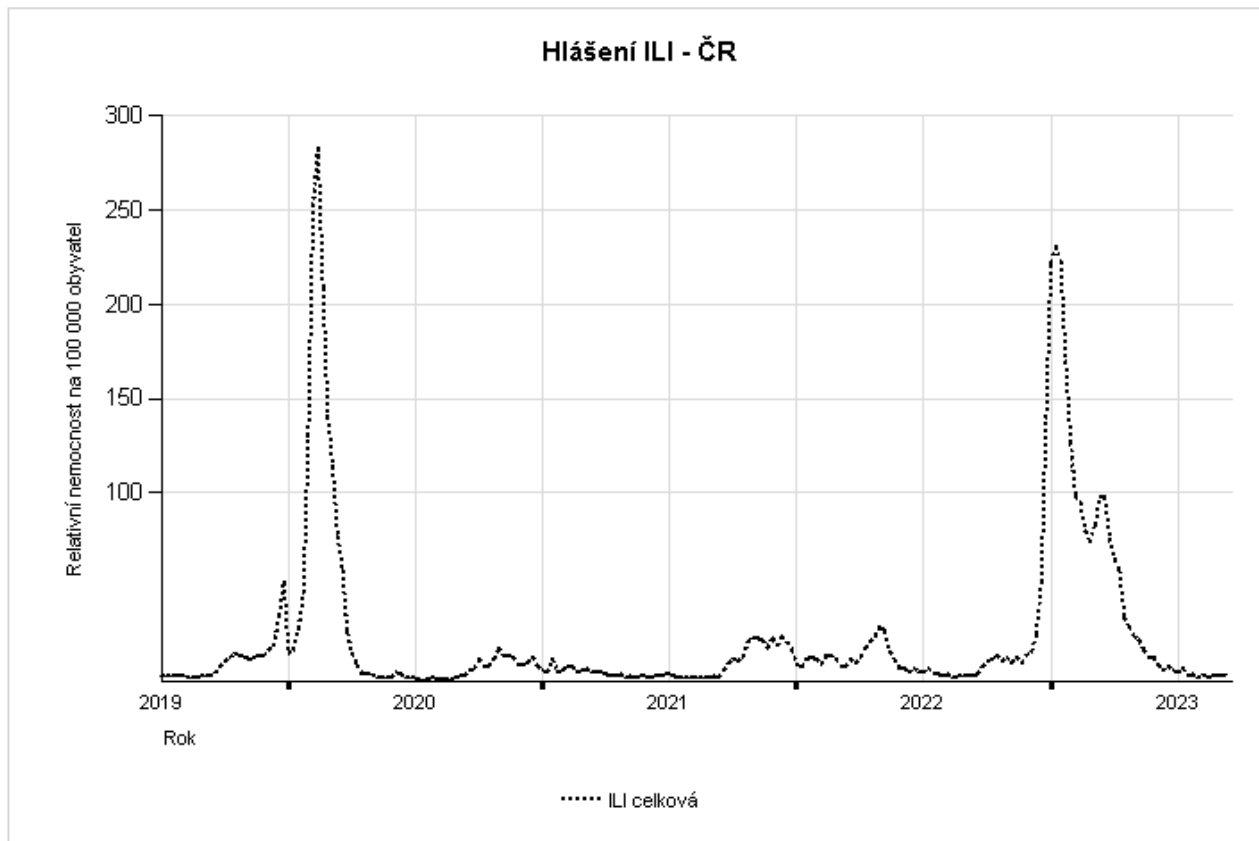
**Weekly total acute respiratory infections morbidity per 100000 population.  
The Czech Republic**



# Weekly total ILI morbidity per 100000 population

The Czech Republic

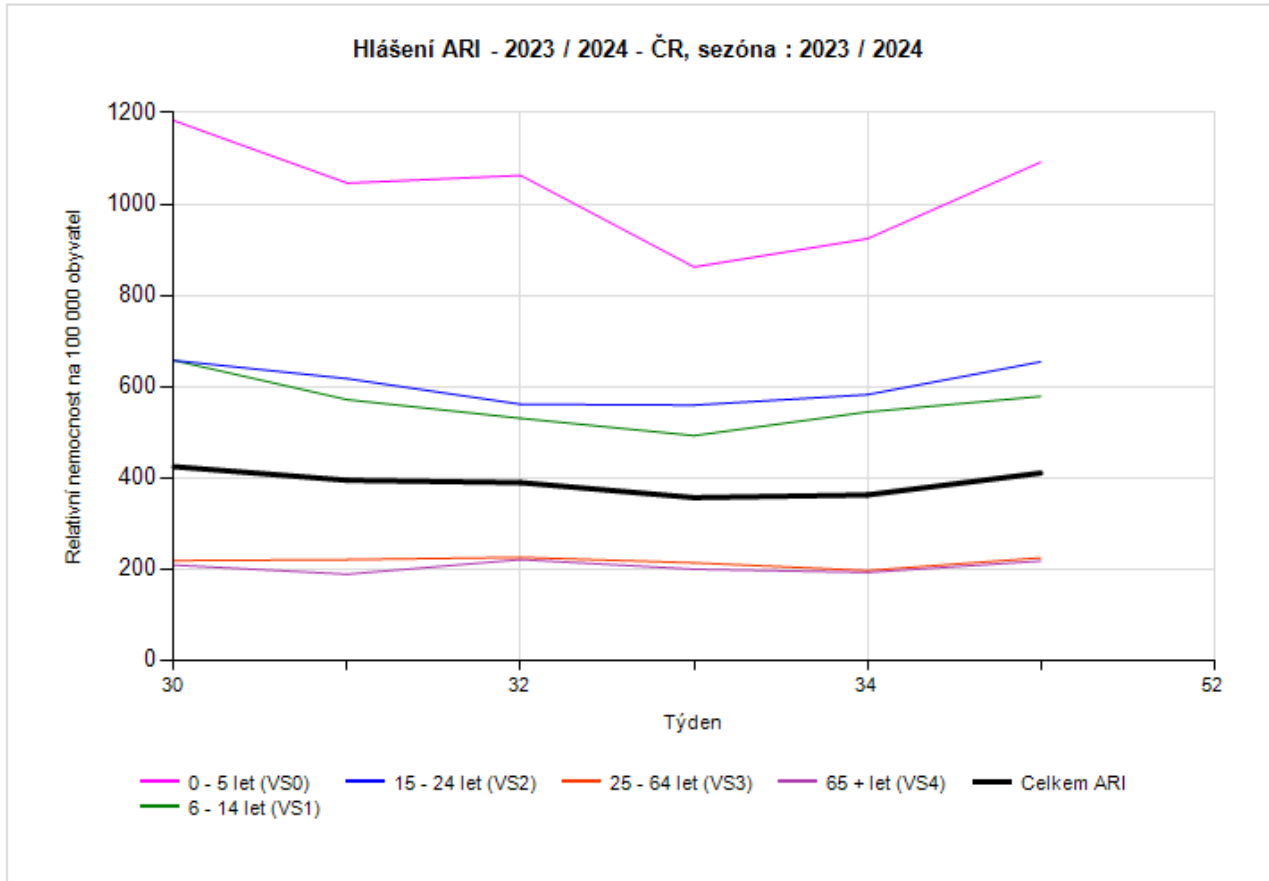
Weekly total ILI morbidity per 100000 population.  
The Czech Republic



# Weekly acute respiratory infections morbidity by age group per 100000 population, 2023/2024

The Czech Republic

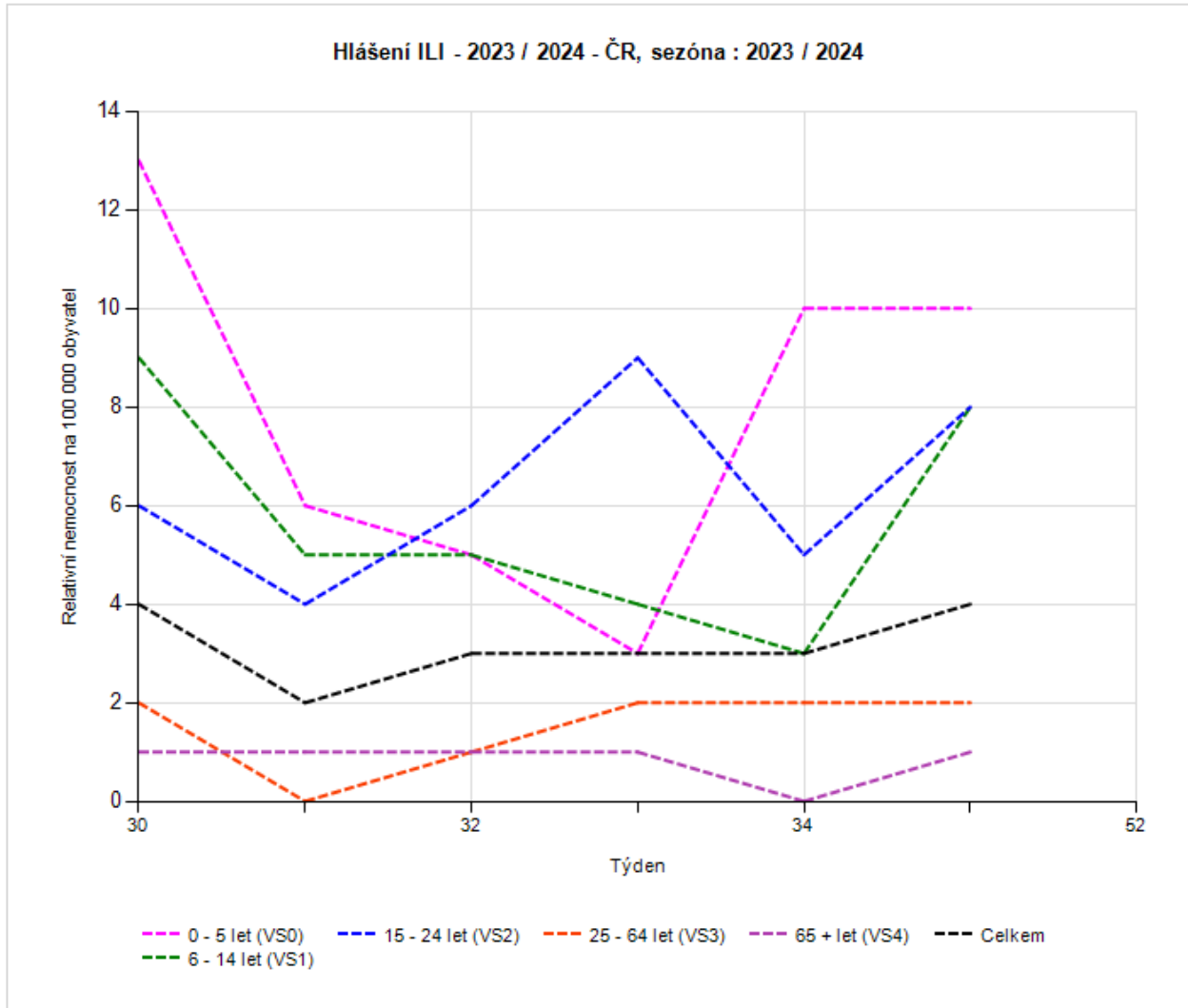
## Weekly acute respiratory infections morbidity by age group per 100000 population, 2023 / 2024 The Czech Republic



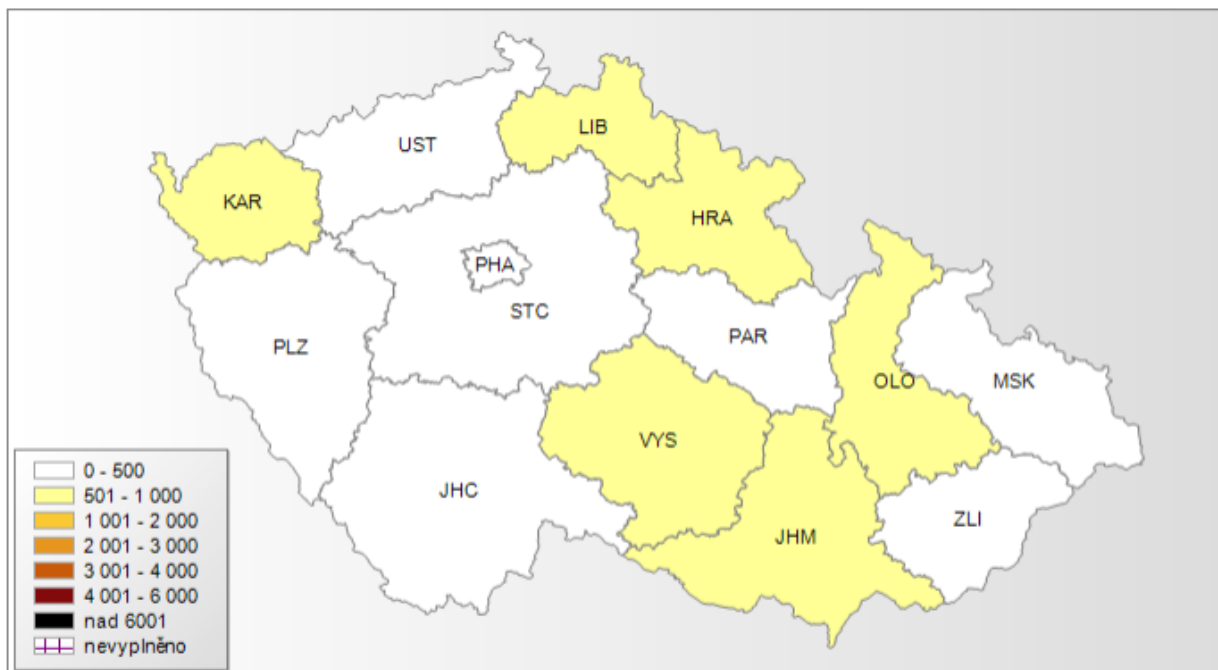
# Weekly ILI morbidity by age group per 100000 population, 2023/2024

The Czech Republic

## Weekly ILI morbidity by age group per 100000 population, 2023 / 2024 The Czech Republic



Nemocnost ARI pro kraje ČR 35/2023 (morbidity by region), rok: 2023, týden: 35, věková skup.: Celkem



Relativní nemocnost na 100000 obyvatel  
ARI  
týden 35/2023  
věková skupina Celkem

Nemocnost ILI pro kraje ČR 35/2023 (morbidity by region)rok: 2023, týden: 35, věková skup.: Celkem



Relativní nemocnost na 100000 obyvatel  
ILI  
týden 35/2023  
věková skupina Celkem