

52 týden 2023 - Week 52

Státní zdravotní ústav - National Institute of Public Health**Hlášení akutních respiračních infekcí (ARI) - Notification of acute respiratory infections**

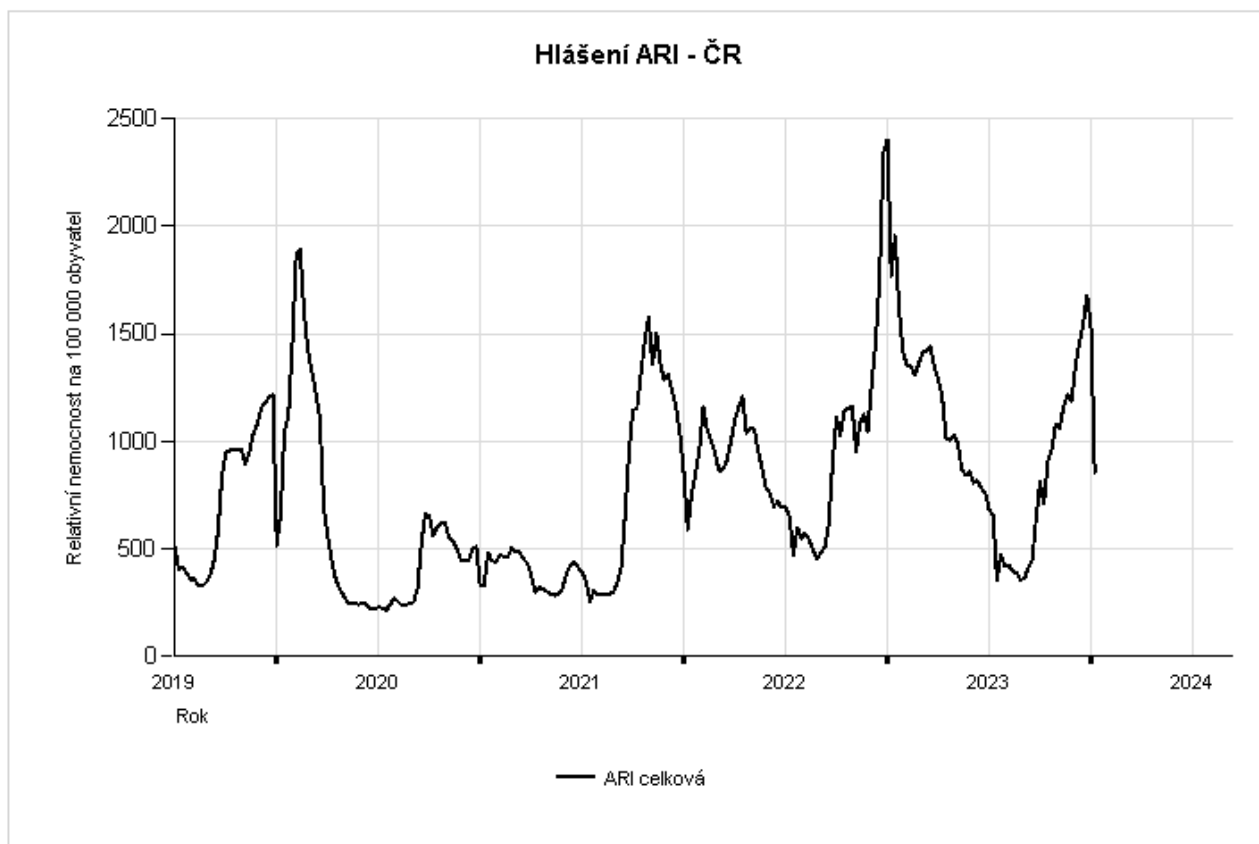
ARI	Relativní nemocnost na 100000 obyvatel - Morbidity per 100000 population					
	0 - 5 let/yrs	6 - 14 let/yrs	15 - 24 let/yrs	25 - 64 let/yrs	65+ let/yrs	Celkem / Total
Česká republika - the Czech Republic	2339	1273	1264	468	445	854
<i>Změna - Change [%]</i>	<i>-41,57</i>	<i>-45,53</i>	<i>-44,78</i>	<i>-46,39</i>	<i>-45,53</i>	<i>-44,69</i>
<i>Komplikace - Complication [%]</i>	<i>2,37</i>	<i>2,51</i>	<i>0,99</i>	<i>1,52</i>	<i>1,94</i>	<i>1,86</i>

ILI	Relativní nemocnost na 100000 obyvatel - Morbidity per 100000 population					
	0 - 5 let/yrs	6 - 14 let/yrs	15 - 24 let/yrs	25 - 64 let/yrs	65+ let/yrs	Celkem / Total
Česká republika - the Czech Republic	75	57	39	19	23	32
<i>Změna - Change [%]</i>	<i>-44,85</i>	<i>-38,71</i>	<i>-45,07</i>	<i>-34,48</i>	<i>-14,81</i>	<i>-39,62</i>

Weekly total acute respiratory infections morbidity per 100000 population

The Czech Republic

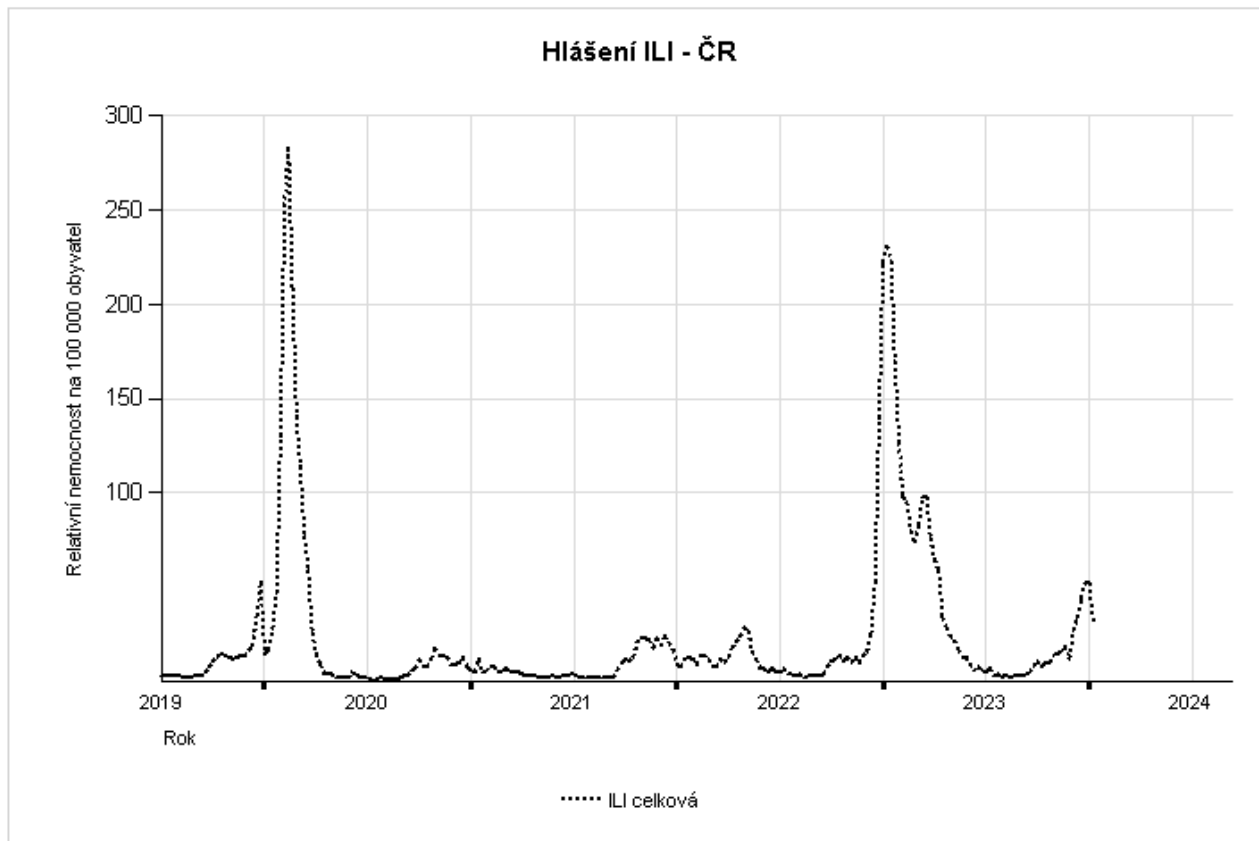
Weekly total acute respiratory infections morbidity per 100000 population.
The Czech Republic



Weekly total ILI morbidity per 100000 population

The Czech Republic

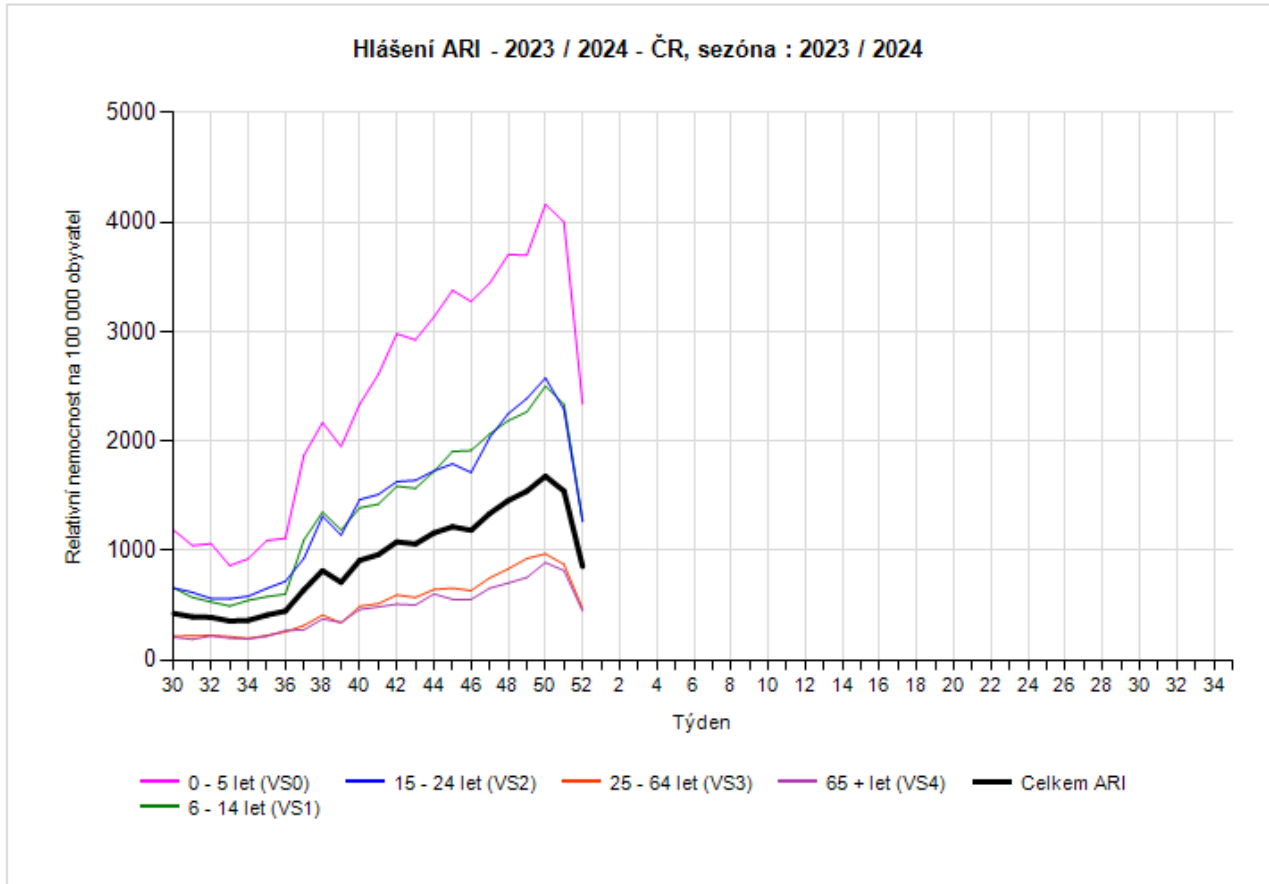
Weekly total ILI morbidity per 100000 population.
The Czech Republic



Weekly acute respiratory infections morbidity by age group per 100000 population, 2023/2024

The Czech Republic

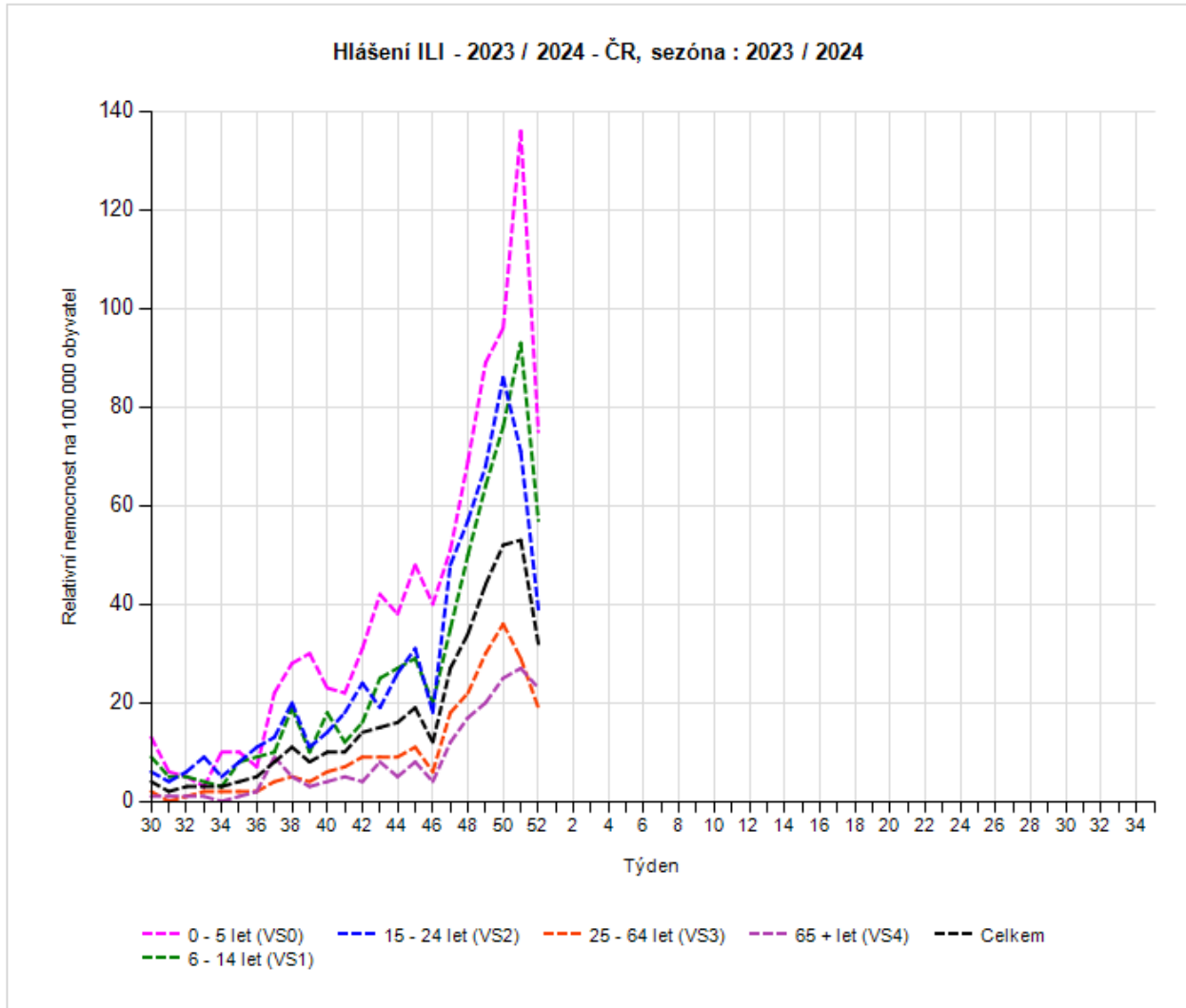
Weekly acute respiratory infections morbidity by age group per 100000 population, 2023 / 2024 The Czech Republic



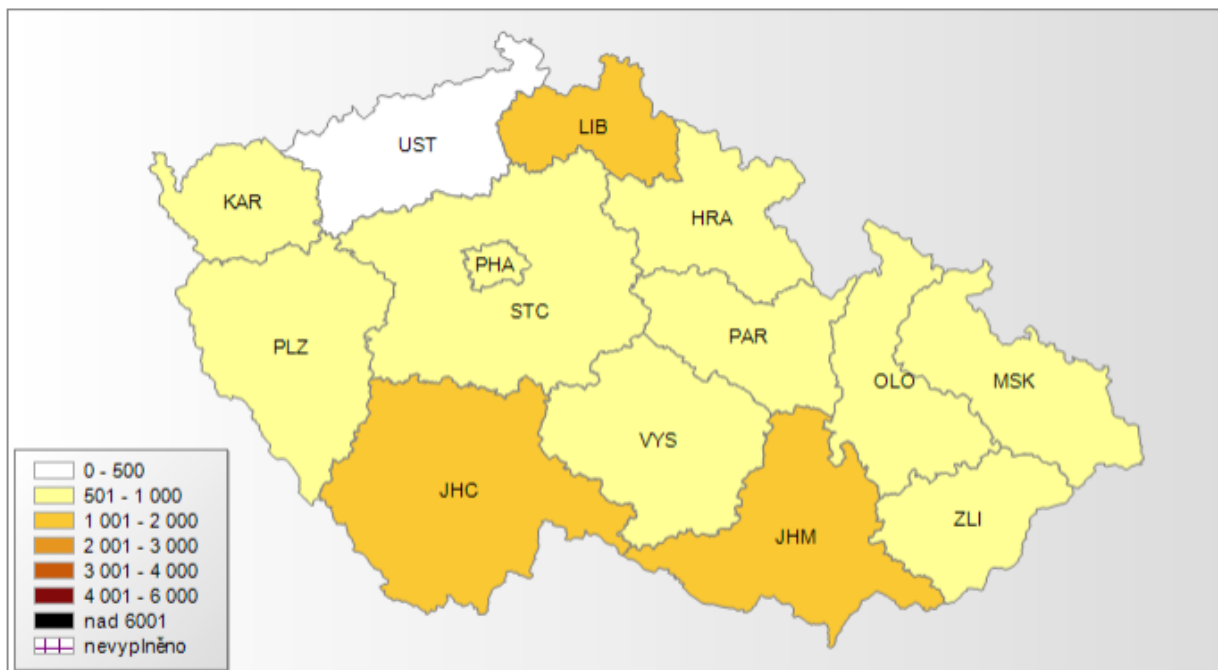
Weekly ILI morbidity by age group per 100000 population, 2023/2024

The Czech Republic

Weekly ILI morbidity by age group per 100000 population, 2023 / 2024 The Czech Republic

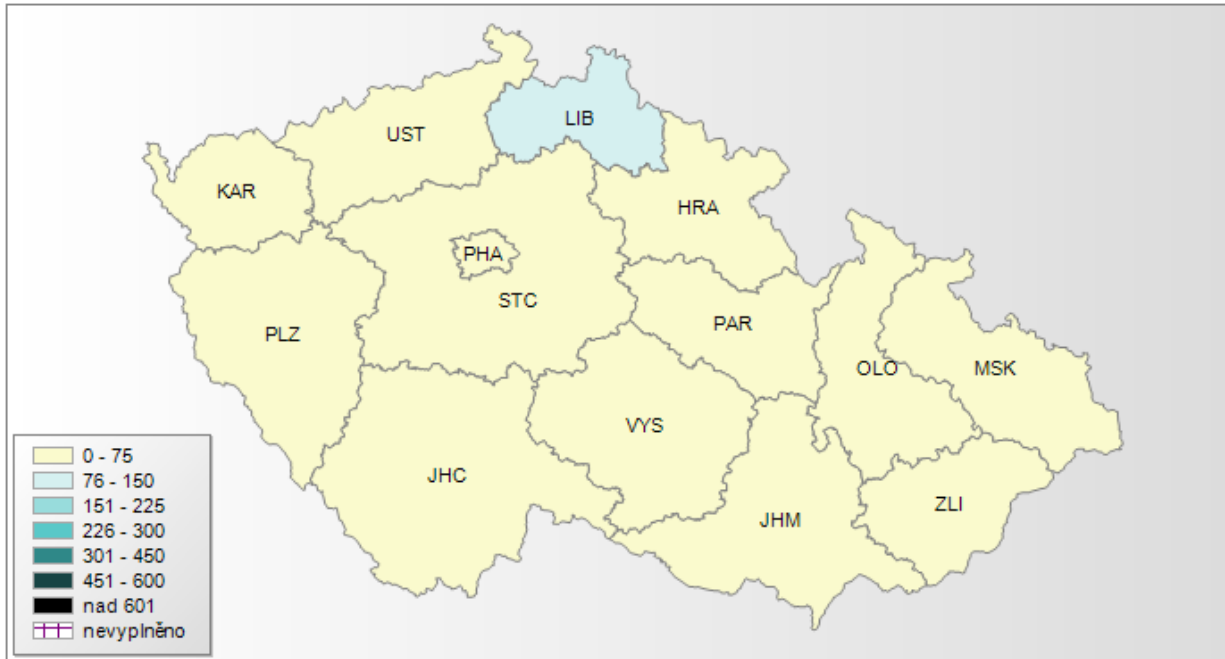


Nemocnost ARI pro kraje ČR 52/2023 (morbidity by region), rok: 2023, týden: 52, věková skup.: Celkem



Relativní nemocnost na 100000 obyvatel
ARI
týden 52/2023
věková skupina Celkem

Nemocnost ILI pro kraje ČR 52/2023 (morbidity by region)rok: 2023, týden: 52, věková skup.: Celkem



Relativní nemocnost na 100000 obyvatel
ILI
týden 52/2023
věková skupina Celkem