

24 týden 2024 - Week 24

Státní zdravotní ústav - National Institute of Public Health**Hlášení akutních respiračních infekcí (ARI) - Notification of acute respiratory infections**

ARI	Relativní nemocnost na 100000 obyvatel - Morbidity per 100000 population					
	0 - 5 let/yrs	6 - 14 let/yrs	15 - 24 let/yrs	25 - 64 let/yrs	65+ let/yrs	Celkem / Total
Česká republika - the Czech Republic	2429	1530	1278	394	335	846
<i>Změna - Change [%]</i>	3,67	-1,86	-1,24	-0,25	-3,18	0,12
<i>Komplikace - Complication [%]</i>	1,29	1,52	0,63	0,64	0,99	1,03

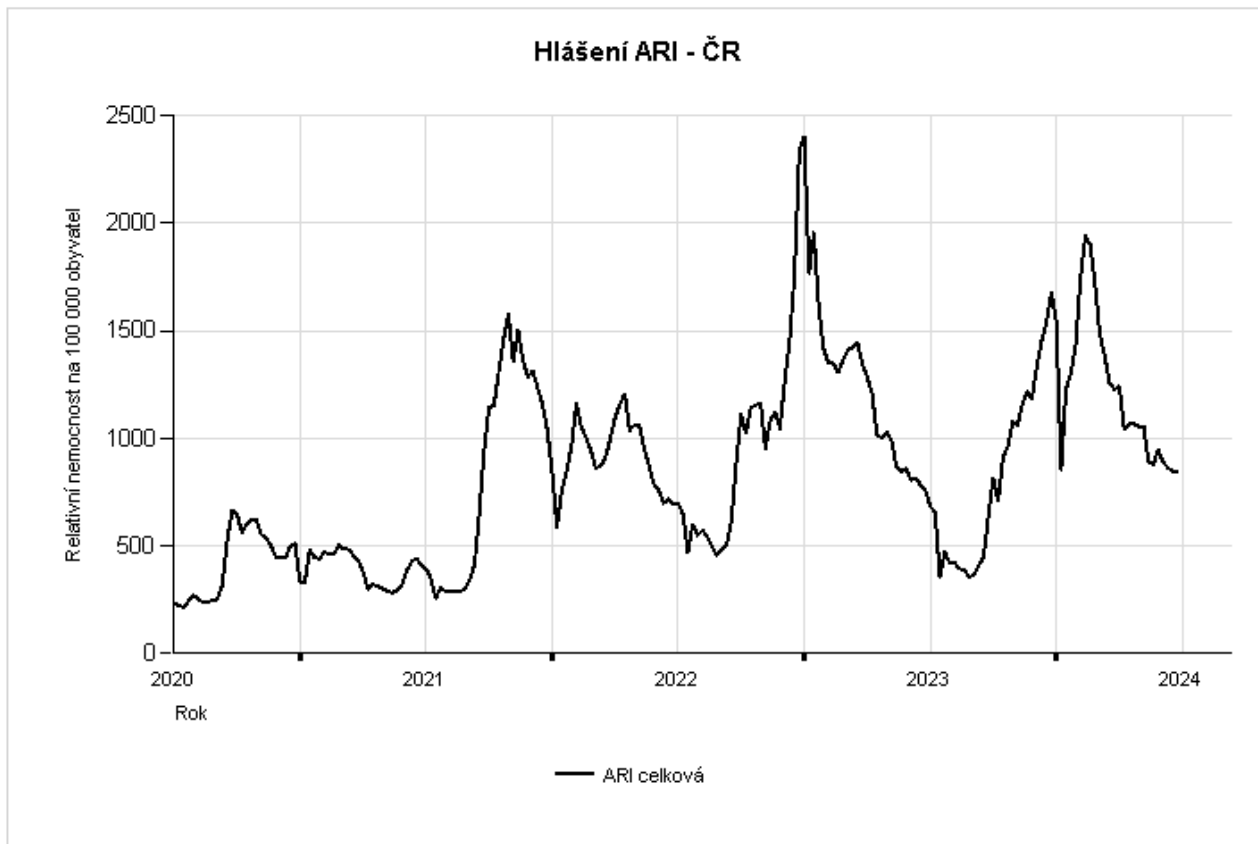
ILI	Relativní nemocnost na 100000 obyvatel - Morbidity per 100000 population					
	0 - 5 let/yrs	6 - 14 let/yrs	15 - 24 let/yrs	25 - 64 let/yrs	65+ let/yrs	Celkem / Total
Česká republika - the Czech Republic	31	18	16	3	4	9
<i>Změna - Change [%]</i>	29,17	28,57	6,67	-25	0	0

Weekly total acute respiratory infections morbidity per 100000 population

The Czech Republic



Weekly total acute respiratory infections morbidity per 100000 population. The Czech Republic

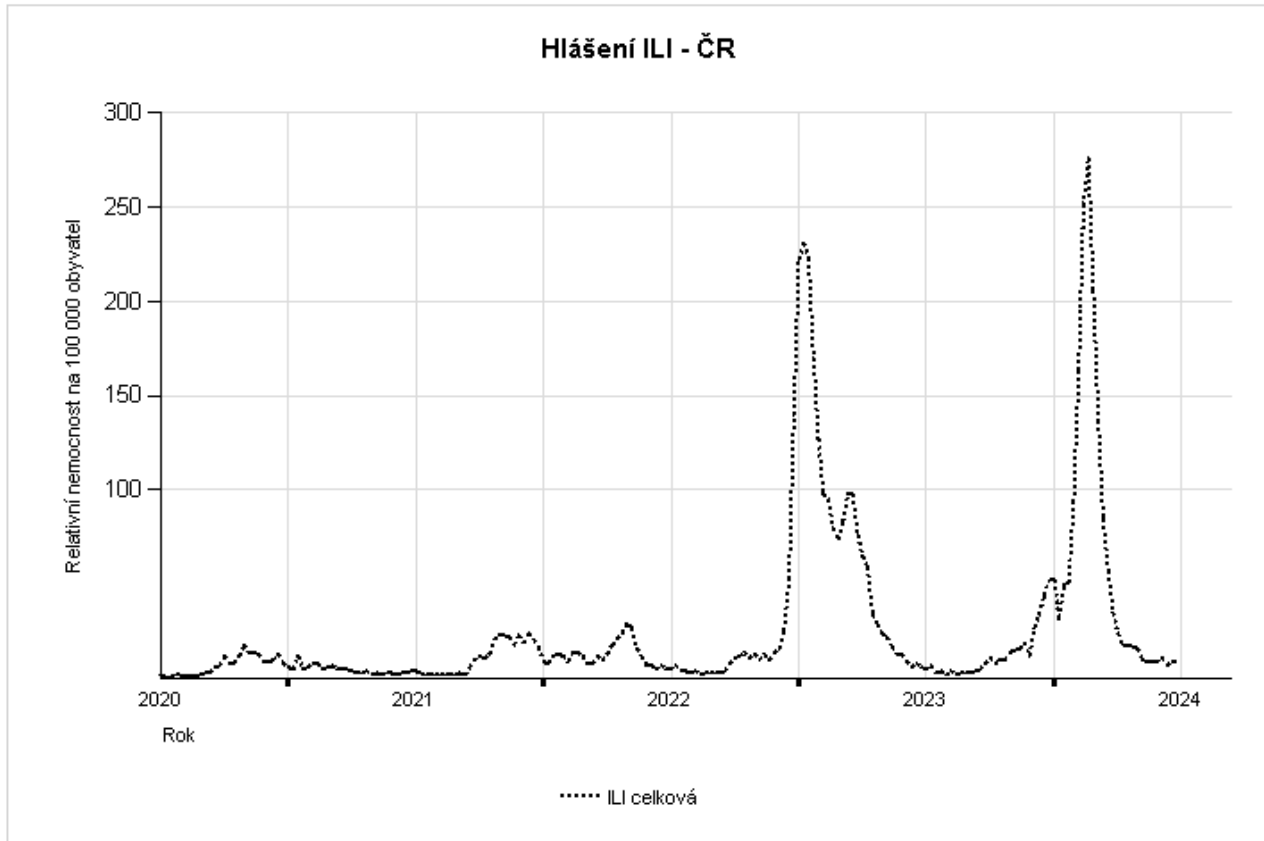


Weekly total ILI morbidity per 100000 population

The Czech Republic



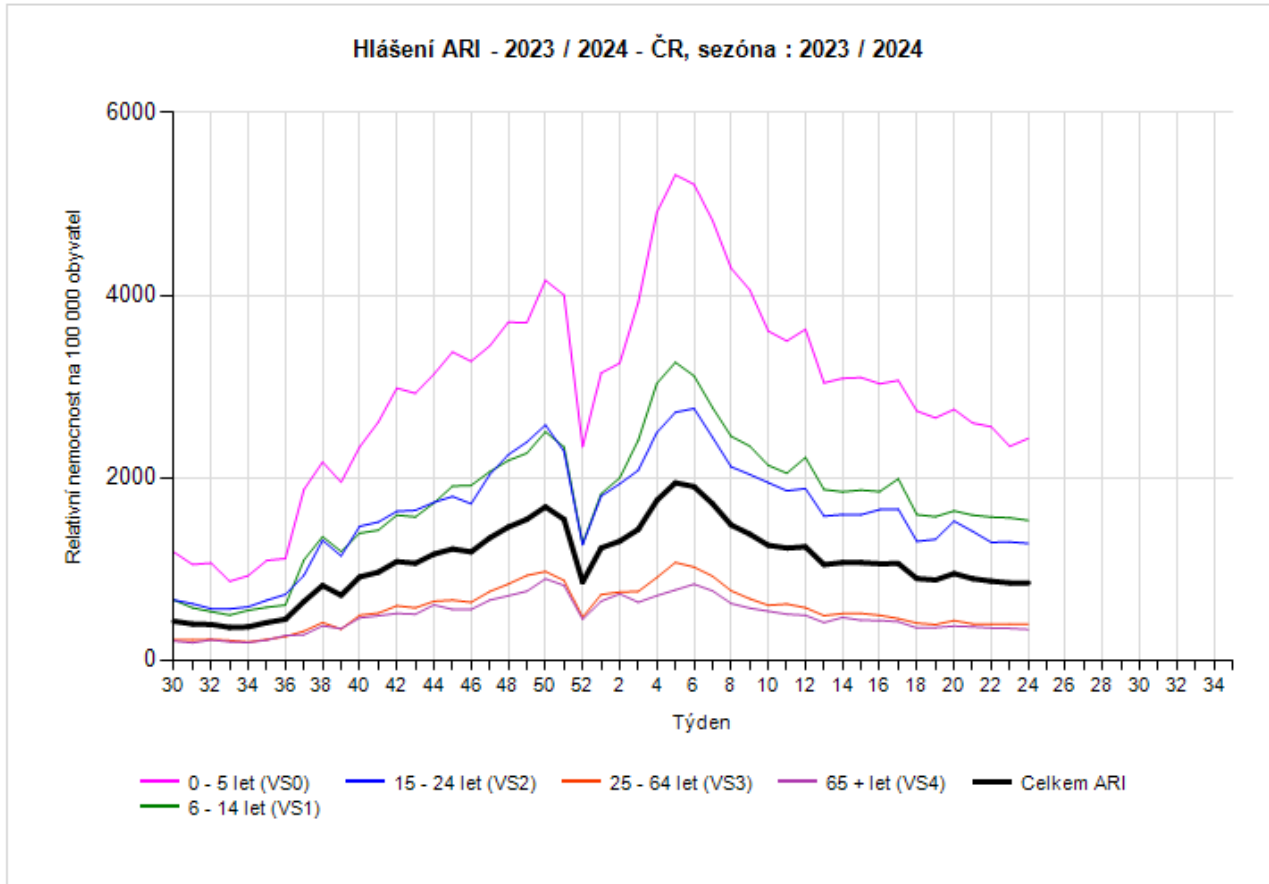
Weekly total ILI morbidity per 100000 population. The Czech Republic



Weekly acute respiratory infections morbidity by age group per 100000 population, 2023/2024

The Czech Republic

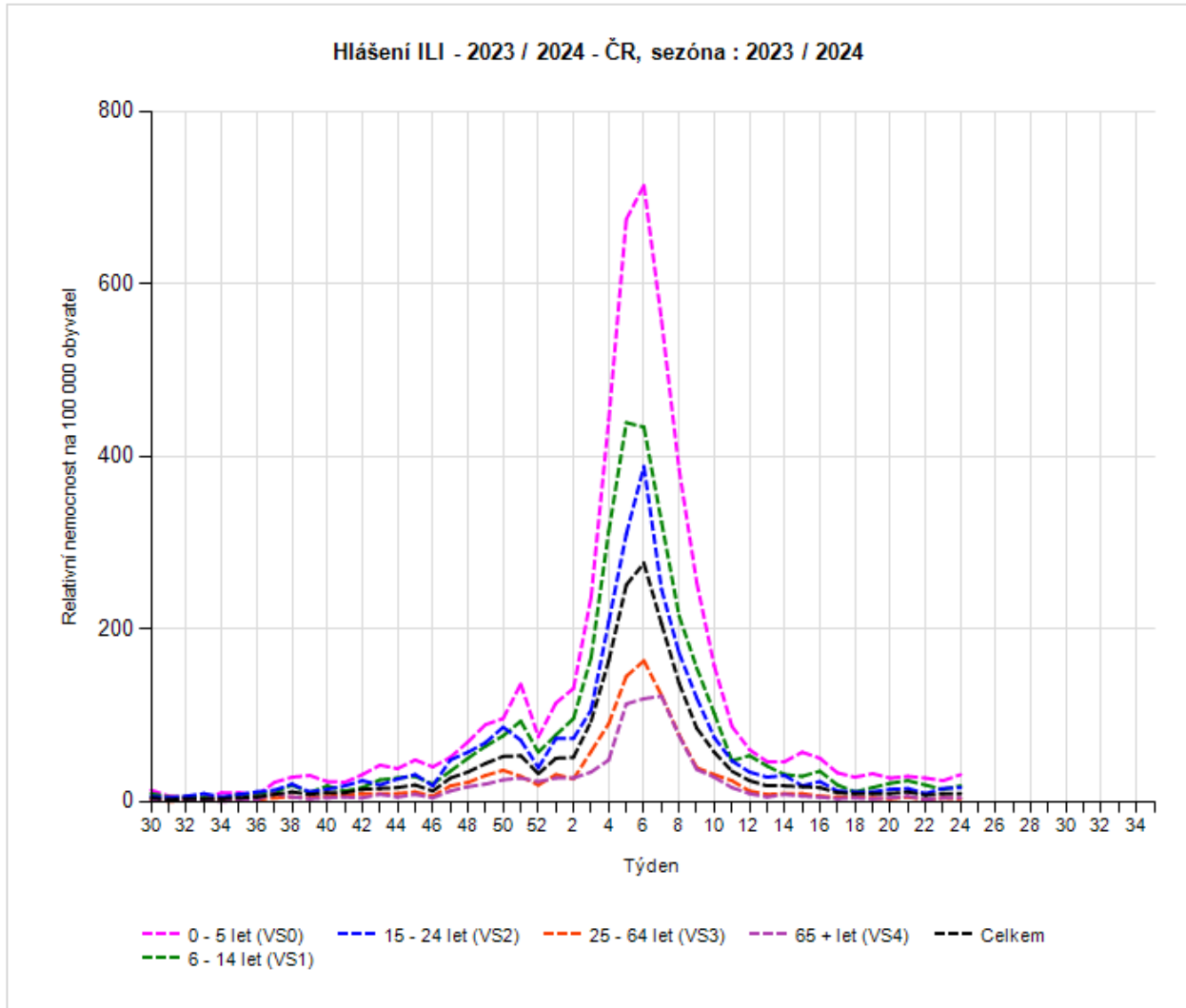
Weekly acute respiratory infections morbidity by age group per 100000 population, 2023 / 2024 The Czech Republic



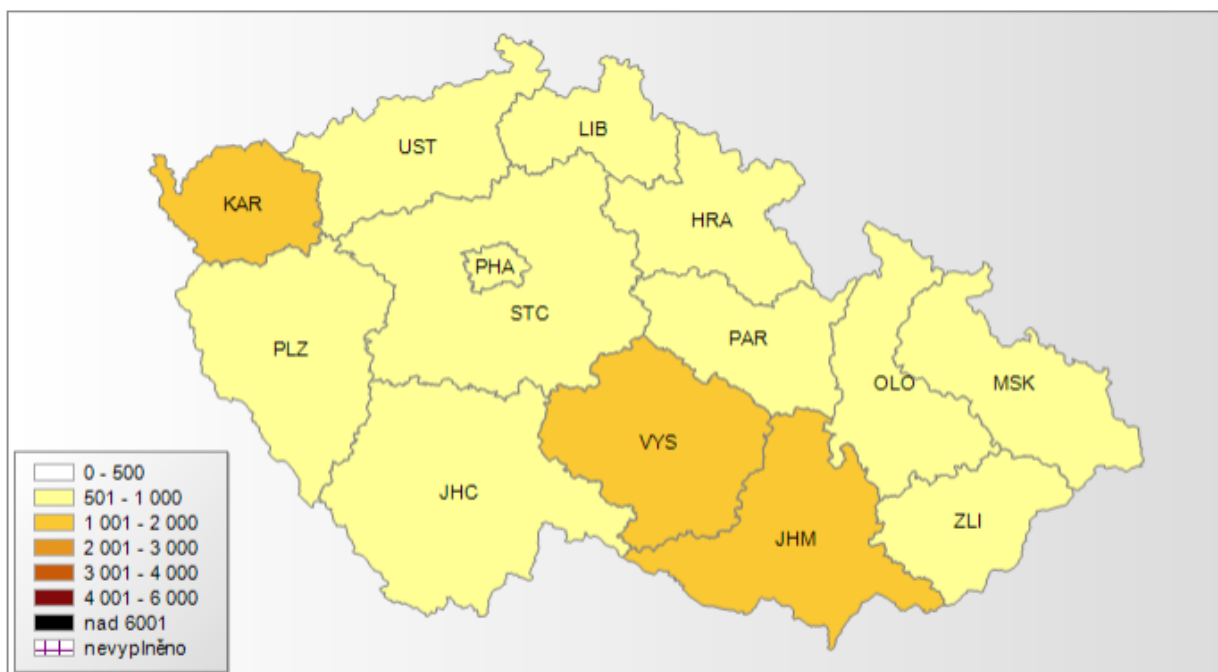
Weekly ILI morbidity by age group per 100000 population, 2023/2024

The Czech Republic

Weekly ILI morbidity by age group per 100000 population, 2023 / 2024 The Czech Republic



Nemocnost ARI pro kraje ČR 24/2024 (morbidity by region), rok: 2024, týden: 24, věková skup.: Celkem



Relativní nemocnost na 100000 obyvatel
ARI
týden 24/2024
věková skupina Celkem

Nemocnost ILI pro kraje ČR 24/2024 (morbidity by region)rok: 2024, týden: 24, věková skup.: Celkem



Relativní nemocnost na 100000 obyvatel
ILI
týden 24/2024
věková skupina Celkem